



[Go to Product page](#)

Datasheet for ABIN1353538

FAM43A Protein (AA 1-423) (GST tag)

1 Image

Overview

Quantity:	25 µg
Target:	FAM43A
Protein Characteristics:	AA 1-423
Origin:	Human
Source:	Wheat germ
Protein Type:	Recombinant
Purification tag / Conjugate:	This FAM43A protein is labelled with GST tag.
Application:	ELISA, Western Blotting (WB), Antibody Array (AA), Affinity Purification (AP)

Product Details

Purpose:	FAM43A (Human) Recombinant Protein (P01)
Sequence:	MLPWKHKHFE LLAEAPPRQA SKPKGYAVSL HYSALSSLAR ACPEGALSRV GSMFRSKRKK LHITSEDPTY TVLYLGNATT IQARGDGCTD LAVGKIWSKS EAGRQGTKMK LTVSAQGIRM VHAERALRR PGHLYLLHRV TYCVADARLP KVFAWVYRHE LKHKAVMLRC HAVLVSKPEK AQAMALLLYQ TSANALAEFK RLKRRDDARH QQQELVGAHT IPLVPLRKLK LHGPCCYKPP VERSRAPKL GSITEDLLGE QLEQELQEEE EEEQPEGCPE EEENRAAEGD PAAAAEAQR ALVVAMHFEC GDLLDTLENG RGEALGGGGG SLGPGAGPPP LLLGSASDMK AELSQLISDL GELSGNDVTR TLQADLRVTR LLSGDSTGSE SSIEGGGPDA TSATAGDSSR QADGASADEP HSG
Characteristics:	Human FAM43A full-length ORF (NP_710157.2, 1 a.a. - 423 a.a.) recombinant protein with GST-tag at N-terminal.
Purification:	in vitro wheat germ expression system

Target Details

Target:	FAM43A
Alternative Name:	FAM43A (FAM43A Products)
Background:	Full Gene Name: family with sequence similarity 43, member A Synonyms: FLJ90022
Gene ID:	131583
NCBI Accession:	NM_153690

Application Details

Application Notes:	Optimal working dilution should be determined by the investigator.
Comment:	Preparation method: in vitro, wheat germ expression system Product Quality tested by: 12.5% SDS-PAGE Stained with Coomassie Blue.
Restrictions:	For Research Use only

Handling

Buffer:	50 mM Tris-HCl, 10 mM reduced Glutathione, pH =8.0 in the elution buffer.
Handling Advice:	Aliquot to avoid repeated freezing and thawing.
Storage:	-80 °C
Storage Comment:	Best use within three months from the date of receipt of this protein.

Images

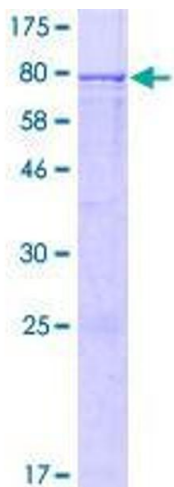


Image 1.