

Datasheet for ABIN135354
anti-CD103 antibody (FITC)[Go to Product page](#)

1 Image

Overview

Quantity:	0.5 mg
Target:	CD103 (ITGAE)
Reactivity:	Mouse
Host:	Hamster
Clonality:	Monoclonal
Conjugate:	This CD103 antibody is conjugated to FITC
Application:	Flow Cytometry (FACS)

Product Details

Immunogen:	C57BL/6J mouse intestinal intraepithelial lymphocytes (IEL)
Clone:	2E7
Isotype:	IgG
Specificity:	Mouse CD103, Mr 150 & 25 kDa
Characteristics:	Hamster Anti-Mouse CD103-FITC

Target Details

Target:	CD103 (ITGAE)
Alternative Name:	CD103 (ITGAE Products)

Application Details

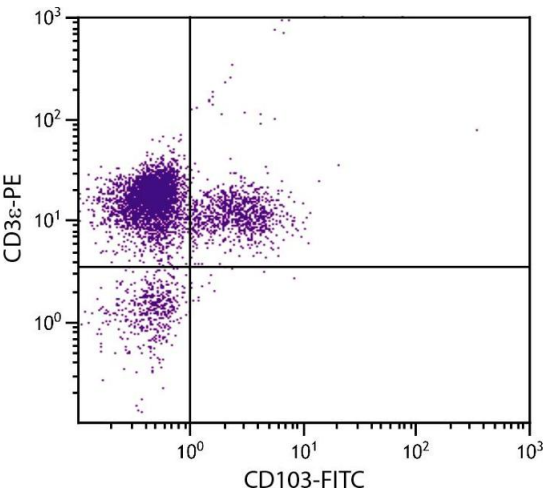
Application Notes:	<ul style="list-style-type: none">• Applications: FC - Quality tested , IP - Reported in literature , IHC-FS - Reported in literature , Activ - Reported in literature• Working Dilutions: Flow Cytometry FITC, BIOT, PACBLU, and AF488 conjugates 1 g/106 cells PE and AF647 conjugates 0.2 g/106 cells For flow cytometry, the suggested use of these reagents is in a final volume of 100 L
--------------------	---

Sample Volume:	1 mL
Restrictions:	For Research Use only

Handling

Concentration:	0.5 mg/mL
Buffer:	0.5 mg in 1.0 mL of PBS/Sodium azide
Preservative:	Sodium azide
Precaution of Use:	This product contains Sodium azide: a POISONOUS AND HAZARDOUS SUBSTANCE which should be handled by trained staff only.
Handling Advice:	Protect conjugated products from light. Each reagent is stable for the period shown on the bottle label if stored as directed.
Storage:	4 °C
Storage Comment:	Store at 2-8°C

Images



Flow Cytometry

Image 1. CD-1 mouse mesenteric lymph node cells were stained with Hamster Anti-Mouse CD103-FITC.