



[Go to Product page](#)

Datasheet for ABIN1353547

FAM46A Protein (AA 1-442) (GST tag)

1 Image

Overview

Quantity:	10 µg
Target:	FAM46A
Protein Characteristics:	AA 1-442
Origin:	Human
Source:	Wheat germ
Protein Type:	Recombinant
Purification tag / Conjugate:	This FAM46A protein is labelled with GST tag.
Application:	ELISA, Western Blotting (WB), Antibody Array (AA), Affinity Purification (AP)

Product Details

Purpose:	FAM46A (Human) Recombinant Protein (P01)
Sequence:	MAEGEGYFAM SEDELACSPY IPLGGDFGGG DFGGGDFGGG DFGGGGSFSGG HCLDYCESPT AHCNVLNWEQ VQRLDGILSE TIPIHGRGNF PTLELQPSLI VKVVRRLAE KRIGVRDVRL NGSAASHVLH QDSGLGYKDL DLIFCADLRG EGEFQTVKDV VLDCLLDFLP EGVNKEKITP LTLKEAYVQK MVKVCNDSDR WSLISLSNNS GKNVELKFVD SLRRQFEFSV DSFQIKLDSL LLFYECSENP MTETFHPTII GESVYGDFQE AFDHLCNKII ATRNPEEIRG GLLKYCNLL VRGFRPASDE IKTLQRYMCS RFFIDFSDIG EQQRKLESYL QNHFVGLDR KYEYLMTLHG VVNESTVCLM GHERRQLNL ITMLAIRVLA DQNVIPNVAN VTCYYQPAPY VADANFSNYY IAQVQPVFTC QQQTYSTWLP CN
Characteristics:	Human FAM46A full-length ORF (NP_060103.2, 1 a.a. - 442 a.a.) recombinant protein with GST-tag at N-terminal.

Product Details

Purification: in vitro wheat germ expression system

Target Details

Target: FAM46A

Alternative Name: FAM46A ([FAM46A Products](#))

Background: Full Gene Name: family with sequence similarity 46, member A
Synonyms: C6orf37,FLJ20037,FLJ31495,XTP11

Gene ID: 55603

NCBI Accession: [NM_017633](#)

Application Details

Application Notes: Optimal working dilution should be determined by the investigator.

Comment: Preparation method: in vitro, wheat germ expression system
Product Quality tested by: 12.5% SDS-PAGE Stained with Coomassie Blue.

Restrictions: For Research Use only

Handling

Buffer: 50 mM Tris-HCl, 10 mM reduced Glutathione, pH =8.0 in the elution buffer.

Handling Advice: Aliquot to avoid repeated freezing and thawing.

Storage: -80 °C

Storage Comment: Best use within three months from the date of receipt of this protein.

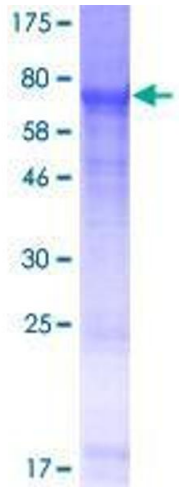


Image 1.