



[Go to Product page](#)

Datasheet for ABIN1353549

FAM46B Protein (AA 1-424) (GST tag)

1 Image

Overview

Quantity:	25 µg
Target:	FAM46B
Protein Characteristics:	AA 1-424
Origin:	Human
Source:	Wheat germ
Protein Type:	Recombinant
Purification tag / Conjugate:	This FAM46B protein is labelled with GST tag.
Application:	ELISA, Western Blotting (WB), Antibody Array (AA), Affinity Purification (AP)

Product Details

Purpose:	FAM46B (Human) Recombinant Protein (P01)
Sequence:	MPSESGAERR DRAAAQVGTA AATAVATAAP AGGGPDPEAL SAFPGRHLSG LSWPQVKRLD ALLSEPIPIH GRGNFPTLSV QPRQIVQVVR STLEEQLHV HSVRLHGSAA SHVLHPESGL GYKDLDLVFR VDLRSEASFQ LTKAVVLA CLDFLPAGVSR AKITPLTLKE AYWQKLVKVC TDSDRWLSLIS LSNKSGKNVE LKFVDSVRRQ FEFSIDSFQI ILDSL LFGQ CSSTPMSEAF HPTVTGESLY GDFTEALEHL RHRVIATRSP EEIRGGGLLK YCHLLVRGFR PRPSTDVRAL QRYMCSRFFI DFPDLVEQRR TLERYLEAHF GGADAARRYA CLVTLHRVNVN ESTVCLMNHE RRQTLDLIAA LALQALAEQG PAATAALAWR PPGTDGVVPA TVNYYVTPVQ PLLAHAYPTW LPCN
Characteristics:	Human FAM46B full-length ORF (NP_443175.1, 1 a.a. - 424 a.a.) recombinant protein with GST-tag at N-terminal.
Purification:	in vitro wheat germ expression system

Target Details

Target:	FAM46B
Alternative Name:	FAM46B (FAM46B Products)
Background:	Full Gene Name: family with sequence similarity 46, member B Synonyms: MGC16491,MGC20845,RP11-344H11.8
Gene ID:	115572
NCBI Accession:	NM_052943

Application Details

Application Notes:	Optimal working dilution should be determined by the investigator.
Comment:	Preparation method: in vitro, wheat germ expression system Product Quality tested by: 12.5% SDS-PAGE Stained with Coomassie Blue.
Restrictions:	For Research Use only

Handling

Buffer:	50 mM Tris-HCl, 10 mM reduced Glutathione, pH =8.0 in the elution buffer.
Handling Advice:	Aliquot to avoid repeated freezing and thawing.
Storage:	-80 °C
Storage Comment:	Best use within three months from the date of receipt of this protein.

Images

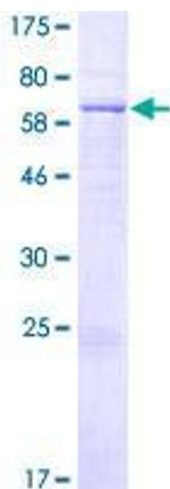


Image 1.