



[Go to Product page](#)

Datasheet for ABIN135356
anti-CD103 antibody (PE)

1 Image

Overview

Quantity:	0.1 mg
Target:	CD103 (ITGAE)
Reactivity:	Mouse
Host:	Hamster
Clonality:	Monoclonal
Conjugate:	This CD103 antibody is conjugated to PE
Application:	Flow Cytometry (FACS)

Product Details

Immunogen:	C57BL/6J mouse intestinal intraepithelial lymphocytes (IEL)
Clone:	2E7
Isotype:	IgG
Specificity:	Mouse CD103, Mr 150 & 25 kDa
Characteristics:	Hamster Anti-Mouse CD103-PE

Target Details

Target:	CD103 (ITGAE)
Alternative Name:	CD103 (ITGAE Products)

Application Details

- Application Notes:
- **Applications:** FC - Quality tested , IP - Reported in literature , IHC-FS - Reported in literature , Activ - Reported in literature
 - **Working Dilutions:** Flow Cytometry FITC, BIOT, PACBLU, and AF488 conjugates 1 g/106 cells PE and AF647 conjugates 0.2 g/106 cells For flow cytometry, the suggested use of these reagents is in a final volume of 100 L

Sample Volume: 1 mL

Restrictions: For Research Use only

Handling

Concentration: 0.1 mg/mL

Buffer: 0.1 mg in 1.0 mL of PBS/Sodium azide and a stabilizing agent

Preservative: Sodium azide

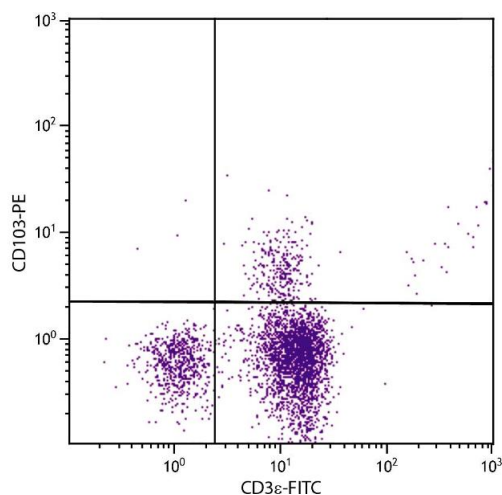
Precaution of Use: This product contains Sodium azide: a POISONOUS AND HAZARDOUS SUBSTANCE which should be handled by trained staff only.

Handling Advice: **Do not freeze!**
Protect conjugated products from light.
Each reagent is stable for the period shown on the bottle label if stored as directed.

Storage: 4 °C

Storage Comment: Store at 2-8°C

Images



Flow Cytometry

Image 1. BALB/c mouse mesenteric lymph node cells were stained with Hamster Anti-Mouse CD103-PE.