



[Go to Product page](#)

Datasheet for ABIN1353562  
**FAM50A Protein (AA 1-88) (GST tag)**

1 Image

Overview

Quantity:	10 µg
Target:	FAM50A
Protein Characteristics:	AA 1-88
Origin:	Human
Source:	Wheat germ
Protein Type:	Recombinant
Purification tag / Conjugate:	This FAM50A protein is labelled with GST tag.
Application:	ELISA, Western Blotting (WB), Antibody Array (AA), Affinity Purification (AP)

Product Details

Purpose:	FAM50A (Human) Recombinant Protein (Q01)
Sequence:	MAQYKGAASE AGRAMHLMKK REKQREQMEQ MKQRIAEENI MKSNIDKKFS AHYDAVEAEL KSSTVGLVTL NDMKAKQEAL VKERЕКQL
Characteristics:	Human FAM50A partial ORF ( NP_004690, 1 a.a. - 88 a.a.) recombinant protein with GST-tag at N-terminal.
Purification:	in vitro wheat germ expression system

Target Details

Target:	FAM50A
Alternative Name:	FAM50A ( <a href="#">FAM50A Products</a> )

## Target Details

Background:	Full Gene Name: family with sequence similarity 50, member A Synonyms: 9F,DXS9928E,HXC-26,XAP5
Gene ID:	9130
NCBI Accession:	<a href="#">NM_004699</a>

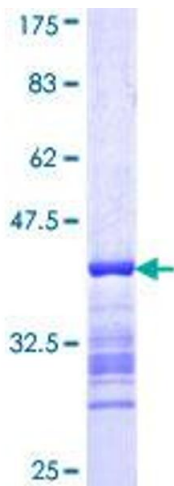
## Application Details

Application Notes:	Optimal working dilution should be determined by the investigator.
Comment:	Preparation method: in vitro, wheat germ expression system Product Quality tested by: 12.5% SDS-PAGE Stained with Coomassie Blue.
Restrictions:	For Research Use only

## Handling

Buffer:	50 mM Tris-HCl, 10 mM reduced Glutathione, pH =8.0 in the elution buffer.
Handling Advice:	Aliquot to avoid repeated freezing and thawing.
Storage:	-80 °C
Storage Comment:	Best use within three months from the date of receipt of this protein.

## Images



**Image 1.**