

Datasheet for ABIN1353568
MTFR1L Protein (AA 1-292) (GST tag)



[Go to Product page](#)

1 Image

Overview

Quantity:	25 µg
Target:	MTFR1L
Protein Characteristics:	AA 1-292
Origin:	Human
Source:	Wheat germ
Protein Type:	Recombinant
Purification tag / Conjugate:	This MTFR1L protein is labelled with GST tag.
Application:	ELISA, Western Blotting (WB), Antibody Array (AA), Affinity Purification (AP)

Product Details

Purpose:	FAM54B (Human) Recombinant Protein (P01)
Sequence:	MSGMEATVTI PIWQNKPHGA ARSVRRIGT NLPLKPCARA SFETLPNISD LCLRDVPPVP TLADIAWIAA DEEETYARVR SDTRPLRHTW KPSPLIVMQR NASVPLNRGS EERLLALKKP ALPALSRTTE LQDELSHLRS QIAKIVAADA ASASLTPDFL SPGSSNVSSP LPCFGSSFHS TTSFVISDIT EETEVEVPEL PSVPLLCAS PECKPEHKA ACSSEEDDC VSLSKASSFA DMMGILKDFH RMKQSQDLNR SLLKEEDPAV LISEVLRKFK ALKEEDISRK GN
Characteristics:	Human FAM54B full-length ORF (AAH17175.1, 1 a.a. - 292 a.a.) recombinant protein with GST-tag at N-terminal.
Purification:	in vitro wheat germ expression system

Target Details

Target:	MTFR1L
Alternative Name:	FAM54B (MTFR1L Products)
Background:	Full Gene Name: family with sequence similarity 54, member B Synonyms: HYST1888,MST116,MSTP116
Gene ID:	56181

Application Details

Application Notes:	Optimal working dilution should be determined by the investigator.
Comment:	Preparation method: in vitro, wheat germ expression system Product Quality tested by: 12.5% SDS-PAGE Stained with Coomassie Blue.
Restrictions:	For Research Use only

Handling

Buffer:	50 mM Tris-HCl, 10 mM reduced Glutathione, pH =8.0 in the elution buffer.
Handling Advice:	Aliquot to avoid repeated freezing and thawing.
Storage:	-80 °C
Storage Comment:	Best use within three months from the date of receipt of this protein.

Images

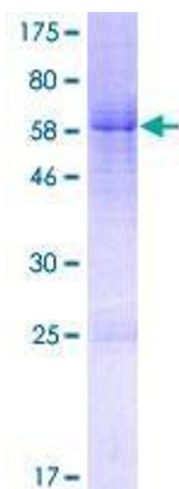


Image 1.