



[Go to Product page](#)

Datasheet for ABIN1353573

FAM60A Protein (AA 1-221) (GST tag)

1 Image

Overview

Quantity:	25 µg
Target:	FAM60A
Protein Characteristics:	AA 1-221
Origin:	Human
Source:	Wheat germ
Protein Type:	Recombinant
Purification tag / Conjugate:	This FAM60A protein is labelled with GST tag.
Application:	ELISA, Western Blotting (WB), Antibody Array (AA), Affinity Purification (AP)

Product Details

Purpose:	FAM60A (Human) Recombinant Protein (P01)
Sequence:	MFGFHKPKMY RSIEGCCICR AKSSSSRFTD SKRYEKDFQS CFGLHETRSG DICNACVLLV KRWKKLPAGS KKNWNHVDA RAGPSLKTTL KPKKVKTLTG NRIKSNQISK LQKEFKRHNS DAHSTTSSAS PAQSPCYSNQ SDDGSDTEMA SGSNRTPVFS FLDLTYWKRQ KICCGIYYKG RFGEVLIDTH LFKPCCSNKK AAAEKPEEQG PEPLISTQE W
Characteristics:	Human FAM60A full-length ORF (NP_067061.1, 1 a.a. - 221 a.a.) recombinant protein with GST-tag at N-terminal.
Purification:	in vitro wheat germ expression system

Target Details

Target:	FAM60A
---------	--------

Target Details

Alternative Name:	FAM60A (FAM60A Products)
Background:	Full Gene Name: family with sequence similarity 60, member A Synonyms: C12orf14,L4,TERA
Gene ID:	58516
NCBI Accession:	NM_021238

Application Details

Application Notes:	Optimal working dilution should be determined by the investigator.
Comment:	Preparation method: in vitro, wheat germ expression system Product Quality tested by: 12.5% SDS-PAGE Stained with Coomassie Blue.
Restrictions:	For Research Use only

Handling

Buffer:	50 mM Tris-HCl, 10 mM reduced Glutathione, pH =8.0 in the elution buffer.
Handling Advice:	Aliquot to avoid repeated freezing and thawing.
Storage:	-80 °C
Storage Comment:	Best use within three months from the date of receipt of this protein.

Images

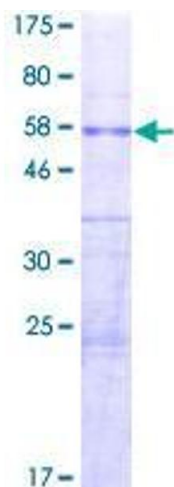


Image 1.