



[Go to Product page](#)

Datasheet for ABIN1353578

Rcs1/Fam64a Protein (AA 1-248) (GST tag)

1 Image

Overview

Quantity:	10 µg
Target:	Rcs1/Fam64a (FAM64A)
Protein Characteristics:	AA 1-248
Origin:	Human
Source:	Wheat germ
Protein Type:	Recombinant
Purification tag / Conjugate:	This Rcs1/Fam64a protein is labelled with GST tag.
Application:	ELISA, Western Blotting (WB), Antibody Array (AA), Affinity Purification (AP)

Product Details

Purpose:	FAM64A (Human) Recombinant Protein (P01)
Sequence:	MASRWQNMGT SVRRRSLQHQ EQLEDSKELQ PVVSHQETSV GALGSLCRQF QRRLLPLRAVN LNLragPSWK RLETPEPGQQ GLQAAARSAK SALGAVSQRI QESCQSGTKW LVETQVKARR RKRGAQKGGSG SPTHLSLSQKS TRLSGAAPAH SAADPWEKEH HRLSVRMGSH AHPLRRSRRE AAFRSPYSST EPLCSPESD SDLEPVGAGI QHLQKLSQEL DEAIMAEERK QALSDRQGFI LKDVYASP
Characteristics:	Human FAM64A full-length ORF (AAH05004.1, 1 a.a. - 248 a.a.) recombinant protein with GST-tag at N-terminal.
Purification:	in vitro wheat germ expression system

Target Details

Target:	Rcs1/Fam64a (FAM64A)
Alternative Name:	FAM64A (FAM64A Products)
Background:	Full Gene Name: family with sequence similarity 64, member A Synonyms: FLJ10156,FLJ10491
Gene ID:	54478

Application Details

Application Notes:	Optimal working dilution should be determined by the investigator.
Comment:	Preparation method: in vitro, wheat germ expression system Product Quality tested by: 12.5% SDS-PAGE Stained with Coomassie Blue.
Restrictions:	For Research Use only

Handling

Buffer:	50 mM Tris-HCl, 10 mM reduced Glutathione, pH =8.0 in the elution buffer.
Handling Advice:	Aliquot to avoid repeated freezing and thawing.
Storage:	-80 °C
Storage Comment:	Best use within three months from the date of receipt of this protein.

Images

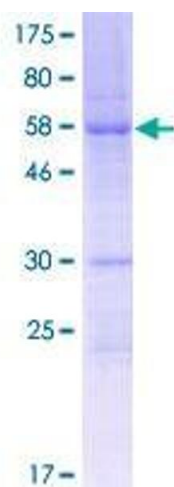


Image 1.