

Datasheet for ABIN1353584

FAM71B Protein (AA 1-605) (GST tag)



[Go to Product page](#)

1 Image

Overview

Quantity:	25 µg
Target:	FAM71B
Protein Characteristics:	AA 1-605
Origin:	Human
Source:	Wheat germ
Protein Type:	Recombinant
Purification tag / Conjugate:	This FAM71B protein is labelled with GST tag.
Application:	ELISA, Western Blotting (WB), Antibody Array (AA), Affinity Purification (AP)

Product Details

Purpose:	FAM71B (Human) Recombinant Protein (P01)
Sequence:	MSNESCLPYT TAHSYSSMSA FKTSMDLQR QLYNRGEYNI FKYAPMFESN FIQINKKGEV IDVHNRVRMV TVGIVCTSPI LPLPDVMVLA QPTKICEQHV RWGRFAKGRG RRPVKTLELT RLLPLKFVKI SIHDHEKQQL RLKLATGRTE YLQLCPSSDT REDLFCYWEK LVYLLRPPVE SYCSTPTLLS GDAPPEDNKS LVAAELHREG DQSETGLYKP CDVSAATSSA YAGGEGIQHA SHGTASAASP STSTPGAAEG GAARTAGGMA VAGTATGPRT DVAIAGAAMS PATGAMSIAT TKSAGPGQVT TALAGAAIKN PGENESSKSM AGAANISSEG ISLALVGAAS TSLEGTSTSM AGAASLSQDS SLSAAFAGSI TTKCAAERT EGPVAVGLIS TLQSEGYMSE RDGSQKVSQP SAEVWVENKE RREKKDRHPS RKSSHHRKAG ESHRRRAGDK NQKASSHRSA SGHKNTRDDK KEKGYSNVRG KRHGSSRKSS THSSTKKESR TTQELGKNQS ASSTGALQKK ASKISSFLRS LRVTPGSKTR VTSHDREVDI VAKMVEKQNI EAKVEKAQGG QELEMISGTM TSEKTEMIVF ETKSI
Characteristics:	Human FAM71B full-length ORF (AAH25998.1, 1 a.a. - 605 a.a.) recombinant protein with GST-

Product Details

tag at N-terminal.

Purification: in vitro wheat germ expression system

Target Details

Target: FAM71B

Alternative Name: FAM71B ([FAM71B Products](#))

Background: Full Gene Name: family with sequence similarity 71, member B
Synonyms: MGC26988

Gene ID: 153745

Application Details

Application Notes: Optimal working dilution should be determined by the investigator.

Comment: Preparation method: in vitro, wheat germ expression system
Product Quality tested by: 12.5% SDS-PAGE Stained with Coomassie Blue.

Restrictions: For Research Use only

Handling

Buffer: 50 mM Tris-HCl, 10 mM reduced Glutathione, pH =8.0 in the elution buffer.

Handling Advice: Aliquot to avoid repeated freezing and thawing.

Storage: -80 °C

Storage Comment: Best use within three months from the date of receipt of this protein.

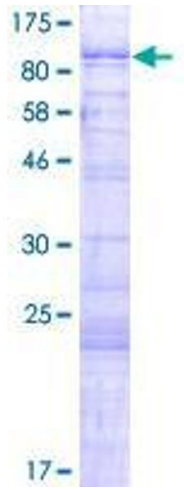


Image 1.