



[Go to Product page](#)

Datasheet for ABIN1353588

## FAM71F1 Protein (AA 1-342) (GST tag)

### 1 Image

#### Overview

Quantity:	25 µg
Target:	FAM71F1
Protein Characteristics:	AA 1-342
Origin:	Human
Source:	Wheat germ
Protein Type:	Recombinant
Purification tag / Conjugate:	This FAM71F1 protein is labelled with GST tag.
Application:	ELISA, Western Blotting (WB), Antibody Array (AA), Affinity Purification (AP)

#### Product Details

Purpose:	FAM71F1 (Human) Recombinant Protein (P01)
Sequence:	MLSSFPHRKT WRKSKKTVKV TRSYPTFPSL NAWEEFRGLL PVDGEPNPGA GLGVEEGLLC RVVHSPEFNL FLDSVVFESN FIQVKRGRNW RDVYKASNTM ALGVTSSVPC LPLPNILLMA SVKWHQGQNQ TWRNPSIAPN IFLKRILPLR FVELQVCDHY QRILQLRTVT EKIIYKLLHP DHPETVFHFW IRLVQILQKG LSITTKDPRI LVTHCLVPKN CSSPSGDSKL VQKKLQASQP SESLIQLMTK GESEALSQIF ADLHQQNQLR SSRKVETNKN SSGKDSSRED SIPCTCDLRW RASFTYGEWE RENPSGLQPL SLLSTLAAST GPQLAPPIGN SI
Characteristics:	Human FAM71F1 full-length ORF ( AAH37248.1, 1 a.a. - 342 a.a.) recombinant protein with GST-tag at N-terminal.
Purification:	in vitro wheat germ expression system

## Target Details

Target:	FAM71F1
Alternative Name:	FAM71F1 ( <a href="#">FAM71F1 Products</a> )
Background:	Full Gene Name: family with sequence similarity 71, member F1 Synonyms: FAM137A,NYD-SP18
Gene ID:	84691

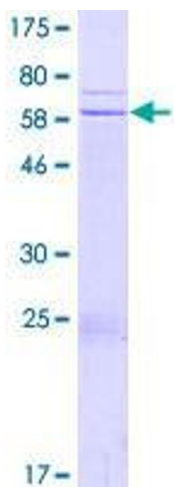
## Application Details

Application Notes:	Optimal working dilution should be determined by the investigator.
Comment:	Preparation method: in vitro, wheat germ expression system Product Quality tested by: 12.5% SDS-PAGE Stained with Coomassie Blue.
Restrictions:	For Research Use only

## Handling

Buffer:	50 mM Tris-HCl, 10 mM reduced Glutathione, pH =8.0 in the elution buffer.
Handling Advice:	Aliquot to avoid repeated freezing and thawing.
Storage:	-80 °C
Storage Comment:	Best use within three months from the date of receipt of this protein.

## Images



**Image 1.**