



[Go to Product page](#)

Datasheet for ABIN1353591

FAM78A Protein (AA 1-263) (GST tag)

1 Image

Overview

Quantity:	10 µg
Target:	FAM78A
Protein Characteristics:	AA 1-263
Origin:	Human
Source:	Wheat germ
Protein Type:	Recombinant
Purification tag / Conjugate:	This FAM78A protein is labelled with GST tag.
Application:	ELISA, Western Blotting (WB), Antibody Array (AA), Affinity Purification (AP)

Product Details

Purpose:	FAM78A (Human) Recombinant Protein (P01)
Sequence:	MGCIQSIGGK ARVFREGITV IDVKASIDPV PTSIDESSV VLRYRTPHFR ASAQVVMPPI PKKETWVVGW IQACSHMEFY NQYGEQGMSS WELPDLQEGK IQAISDSGDV NYPWYGNTTE TCTIVGPTKR DSKFIISMND NFYPSVTWAV PVSESNVAKL TNIYRDSFT TWLVATNTST NDMIILQTLH WRMQLSIEVN PNRPLGQRAR LREPIAQDQP KILSKNEPIP PSALVKPNAN DAQVLMWRPK YGQPLVVIPP KHR
Characteristics:	Human FAM78A full-length ORF (AAH49388.1, 1 a.a. - 263 a.a.) recombinant protein with GST-tag at N-terminal.
Purification:	in vitro wheat germ expression system

Target Details

Target:	FAM78A
Alternative Name:	FAM78A (FAM78A Products)
Background:	Full Gene Name: family with sequence similarity 78, member A Synonyms: C9orf59,FLJ00024
Gene ID:	286336

Application Details

Application Notes:	Optimal working dilution should be determined by the investigator.
Comment:	Preparation method: in vitro, wheat germ expression system Product Quality tested by: 12.5% SDS-PAGE Stained with Coomassie Blue.
Restrictions:	For Research Use only

Handling

Buffer:	50 mM Tris-HCl, 10 mM reduced Glutathione, pH =8.0 in the elution buffer.
Handling Advice:	Aliquot to avoid repeated freezing and thawing.
Storage:	-80 °C
Storage Comment:	Best use within three months from the date of receipt of this protein.

Images

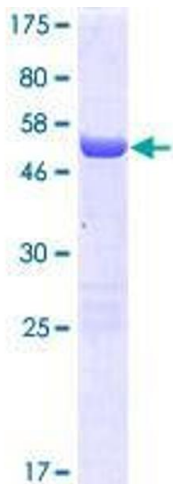


Image 1.