



[Go to Product page](#)

Datasheet for ABIN135360  
**anti-CD24 antibody (PE)**

1 Image

### Overview

Quantity:	0.1 mg
Target:	CD24
Reactivity:	Mouse
Host:	Rat
Clonality:	Monoclonal
Conjugate:	This CD24 antibody is conjugated to PE
Application:	Flow Cytometry (FACS)

### Product Details

Immunogen:	Mouse thymus or spleen
Clone:	30-F1
Isotype:	IgG2c
Specificity:	Mouse CD24, Mr 35-45 kDa
Characteristics:	Rat Anti-Mouse CD24-PE

### Target Details

Target:	CD24
Alternative Name:	CD24 ( <a href="#">CD24 Products</a> )
Background:	CD24 is expressed in B cells until their terminal differentiation into plasma cells. It has been used widely as a marker to fractionate different B-lineage differentiation stages. CD24 has been

## Target Details

---

found on a variety of other hematopoietic and neural cell types, and is now classified as a costimulatory molecule. The CD24/HSA molecule is composed mostly of carbohydrate, with a protein core of only 31-35 amino acids in the human and 27 AA in the mouse. The molecular mass is variable, ranging from 38-70 kDa. CD24 is now included in the large group of phosphatidylinositol-anchored membrane proteins. Studies with purified CD24 applied to latex beads have demonstrated a self-binding property, suggesting that the molecule is capable of promoting homotypic aggregation, binding and cell adhesion. This is supported by earlier observations of the blockade of B cell lymphoblast aggregation with anti-CD24 monoclonal antibody. Recent studies of murine CD24 have assigned a role for CD24/HSA as a ligand for P-selectin, a calcium-dependent lectin.

Pathways: [Regulation of Leukocyte Mediated Immunity](#), [Positive Regulation of Immune Effector Process](#), [Activated T Cell Proliferation](#)

## Application Details

---

Application Notes:

- **Applications:** FC - Quality tested
- **Working Dilutions:** Flow Cytometry FITC and BIOT conjugates 2 g/10<sup>6</sup> cells PE, APC, and SPRD conjugates 0.2 g/10<sup>6</sup> cells For flow cytometry, the suggested use of these reagents is in a final volume of 100 L

Sample Volume: 1 mL

Restrictions: For Research Use only

## Handling

---

Concentration: 0.1 mg/mL

Buffer: 0.1 mg in 1.0 mL or 0.2 mg in 2.0 mL of PBS/Sodium azide and a stabilizing agent

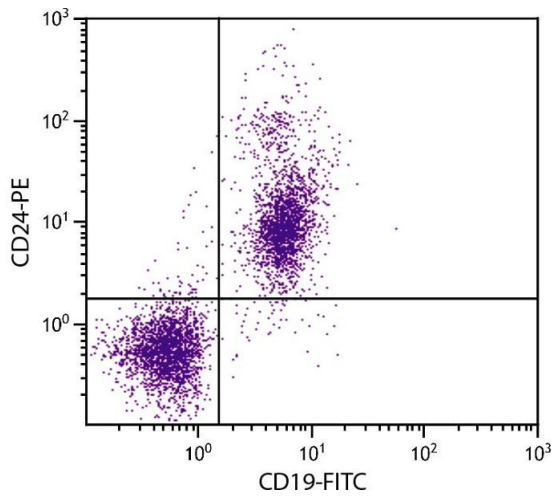
Preservative: Sodium azide

Precaution of Use: This product contains Sodium azide: a POISONOUS AND HAZARDOUS SUBSTANCE which should be handled by trained staff only.

Handling Advice: **Do not freeze!**  
**Protect conjugated products from light.**  
Each reagent is stable for the period shown on the bottle label if stored as directed.

Storage: 4 °C

Storage Comment: Store at 2-8°C



### Flow Cytometry

**Image 1.** BALB/c mouse splenocytes were stained with Rat Anti-Mouse CD24-PE.