

Datasheet for ABIN135361
anti-CD45RC antibody[Go to Product page](#)

1 Image

Overview

Quantity:	0.5 mg
Target:	CD45RC
Reactivity:	Mouse
Host:	Rat
Clonality:	Monoclonal
Conjugate:	This CD45RC antibody is un-conjugated
Application:	Flow Cytometry (FACS)

Product Details

Immunogen:	Unknown
Clone:	C455-1F
Isotype:	IgG2a
Specificity:	Mouse CD45RC, Mr 200-240 kDa
Characteristics:	Rat Anti-Mouse CD45RC-UNLB
Purification:	Purified

Target Details

Target:	CD45RC
Alternative Name:	CD45RC (CD45RC Products)
Background:	The CD45 family of cell-surface glycoprotein antigens exist as a set of isoforms. The patterns

Target Details

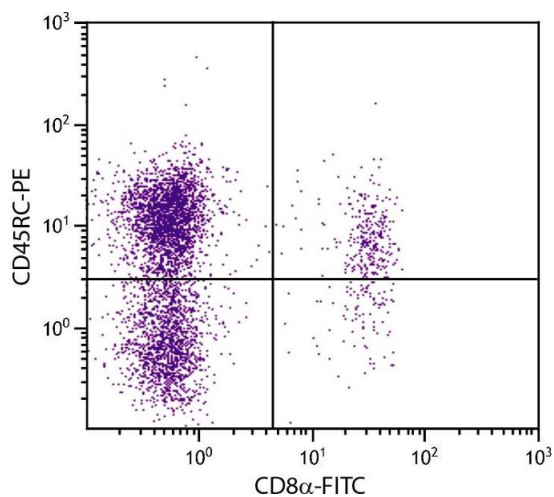
of monoclonal antibody recognition of the CD45 phenotypes can be restricted (CD45RA, RB and RC), or broader, such as the CD45 T-200 species. The restricted subsets of this group arise as a result of translation of alternatively spliced mRNAs from exons A, B and C (exons 4, 5 and 6), where exons 3-15 encode the extracellular domain of the CD45 molecule. The restricted epitopes are differentially expressed on T and B lymphocytes, including functionally distinct T cells.

Application Details

Application Notes:	<ul style="list-style-type: none">• Applications: FC - Quality tested• Working Dilutions: Flow Cytometry FITC and BIOT conjugates 1 g/10⁶ cells PE conjugate 0.2 g/10⁶ cells For flow cytometry, the suggested use of these reagents is in a final volume of 100 L
Sample Volume:	1 mL
Restrictions:	For Research Use only

Handling

Concentration:	0.5 mg/mL
Buffer:	0.5 mg of purified immunoglobulin in 1.0 mL of borate buffered saline, pH 8.2. No preservatives or amine-containing buffer salts added
Preservative:	Without preservative
Handling Advice:	Each reagent is stable for the period shown on the bottle label if stored as directed.
Storage:	4 °C
Storage Comment:	Store at 2-8°C



Flow Cytometry

Image 1. BALB/c mouse splenocytes were stained with Rat Anti-Mouse CD45RC-PE.