

Datasheet for ABIN135365
anti-CD45RC antibody (PE)[Go to Product page](#)

1 Image

Overview

Quantity:	0.1 mg
Target:	CD45RC
Reactivity:	Mouse
Host:	Rat
Clonality:	Monoclonal
Conjugate:	This CD45RC antibody is conjugated to PE
Application:	Flow Cytometry (FACS)

Product Details

Immunogen:	Unknown
Clone:	C455-1F
Isotype:	IgG2a
Specificity:	Mouse CD45RC, Mr 200-240 kDa
Characteristics:	Rat Anti-Mouse CD45RC-PE

Target Details

Target:	CD45RC
Alternative Name:	CD45RC (CD45RC Products)
Background:	The CD45 family of cell-surface glycoprotein antigens exist as a set of isoforms. The patterns of monoclonal antibody recognition of the CD45 phenotypes can be restricted (CD45RA, RB and

Target Details

RC), or broader, such as the CD45 T-200 species. The restricted subsets of this group arise as a result of translation of alternatively spliced mRNAs from exons A, B and C (exons 4, 5 and 6), where exons 3-15 encode the extracellular domain of the CD45 molecule. The restricted epitopes are differentially expressed on T and B lymphocytes, including functionally distinct T cells.

Application Details

Application Notes:

- **Applications:** FC - Quality tested
- **Working Dilutions:** Flow Cytometry FITC and BIOT conjugates 1 g/10⁶ cells PE conjugate 0.2 g/10⁶ cells For flow cytometry, the suggested use of these reagents is in a final volume of 100 L

Sample Volume: 1 mL

Restrictions: For Research Use only

Handling

Concentration: 0.1 mg/mL

Buffer: 0.1 mg in 1.0 mL of PBS/Sodium azide and a stabilizing agent

Preservative: Sodium azide

Precaution of Use: This product contains Sodium azide: a POISONOUS AND HAZARDOUS SUBSTANCE which should be handled by trained staff only.

Handling Advice:

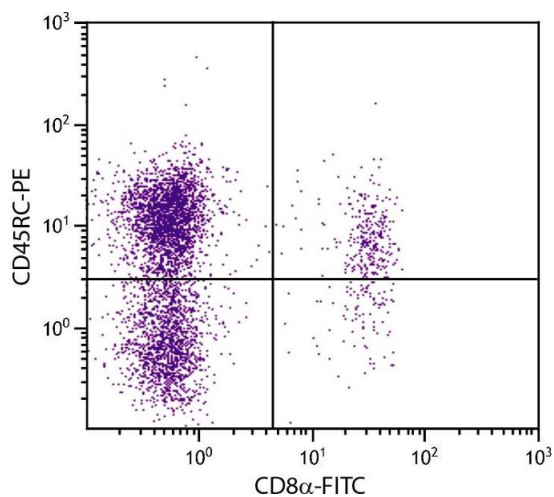
Do not freeze!

Protect conjugated products from light.

Each reagent is stable for the period shown on the bottle label if stored as directed.

Storage: 4 °C

Storage Comment: Store at 2-8°C



Flow Cytometry

Image 1. BALB/c mouse splenocytes were stained with Rat Anti-Mouse CD45RC-PE.