



[Go to Product page](#)

Datasheet for ABIN1353680

FASTKD1 Protein (AA 2-99) (GST tag)

1 Image

Overview

Quantity:	2 µg
Target:	FASTKD1
Protein Characteristics:	AA 2-99
Origin:	Human
Source:	Wheat germ
Protein Type:	Recombinant
Purification tag / Conjugate:	This FASTKD1 protein is labelled with GST tag.
Application:	Antibody Array (AA), Affinity Purification (AP), ELISA, Western Blotting (WB)

Product Details

Purpose:	FLJ21901 (Human) Recombinant Protein (Q01)
Sequence:	KKTPVFLESL VTNMLRLRAI CPFSWRVFQF RPISCEPLII QMNKCTDEEQ MFGFIERNKA ILSEKQVGCA FDMWLKQLKQ KTSLLKNAEY VRDHPQFL
Characteristics:	Human FLJ21901 partial ORF (NP_078898, 2 a.a. - 99 a.a.) recombinant protein with GST-tag at N-terminal.
Purification:	in vitro wheat germ expression system

Target Details

Target:	FASTKD1
Alternative Name:	FASTKD1 (FASTKD1 Products)

Target Details

Background: Full Gene Name: FAST kinase domains 1
Synonyms: FLJ21901,KIAA1800

Gene ID: 79675

NCBI Accession: [NM_024622](#)

Application Details

Application Notes: Optimal working dilution should be determined by the investigator.

Comment: Preparation method: in vitro, wheat germ expression system
Product Quality tested by: 12.5% SDS-PAGE Stained with Coomassie Blue.

Restrictions: For Research Use only

Handling

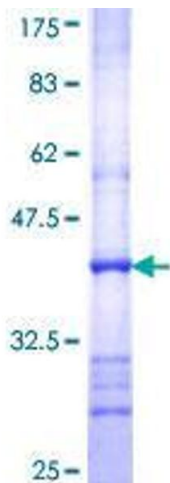
Buffer: 50 mM Tris-HCl, 10 mM reduced Glutathione, pH =8.0 in the elution buffer.

Handling Advice: Aliquot to avoid repeated freezing and thawing.

Storage: -80 °C

Storage Comment: Best use within three months from the date of receipt of this protein.

Images



SDS-PAGE

Image 1.