

Datasheet for ABIN1353696

Fibulin 1 Protein (FBLN1) (AA 1-683) (GST tag)



[Go to Product page](#)

1 Image

Overview

| | |
|-------------------------------|---|
| Quantity: | 10 µg |
| Target: | Fibulin 1 (FBLN1) |
| Protein Characteristics: | AA 1-683 |
| Origin: | Human |
| Source: | Wheat germ |
| Protein Type: | Recombinant |
| Purification tag / Conjugate: | This Fibulin 1 protein is labelled with GST tag. |
| Application: | Western Blotting (WB), ELISA, Antibody Array (AA), Affinity Purification (AP) |

Product Details

| | |
|-----------|--|
| Purpose: | FBLN1 (Human) Recombinant Protein (P01) |
| Sequence: | <p>MERAAPSRRV PLQLLLLGGL ALLAAGVDAD VLLEACCADG HRMATHQKDC SLPYATESKE CRMVQEQCCH SQLEELHCAT GISLANEQDR CATPHGDNAS LEATFVKRCC HCCLLGRAAQ AQQQSCEYSL MVGYQCGQVF RACCVKSQET GDLDVGGGLQE TDKIIEVEEEE QEDPYLNDR RGGGPKKQQC RDTGDEVVCS CFVGYQLLSD GVSCEDVNEC ITGSHSCLRG ESCINTVGSF RCQRDSSCGT GYELTEDNSC KDIDECESGI HNCLPDFICQ NTLGSFRCRP KLQCKSGFIQ DALGNCIDIN ECLISAPCP IGHTCINTEG SYTCQKNVPN CGRGYHLNEE GTRCVDVDEC APPAEPCKGK HRCVNSPGSF RCECKTGYFF DGISRMCDV NEQRYPGRL CGHKCENTLG SYLCSCSVGF RLSVDGRSCE DINECSSPC SQECANVYGS YQCYCRRGYQ LSDVDGVTCE DIDICALPTG GHICSYRCIN IPGSFQCSCP SSGYRLAPNG SNCQDIDECV TGIHNC SINE TCFNIQGGFR CLAFECPENY RRSAAATRCER LPCHENRECS KLPLRITYYH LSFPTNIQAP AVVFRMG PSS AVPGDSMQLA ITGGNEEGFF TTRKVSPHSG VVALTKPVPE PRDLLLTVKM</p> |

Product Details

DLSRHGTVSS FVAKLFIFVS AEL

| | |
|------------------|--|
| Characteristics: | Human FBLN1 full-length ORF (AAH22497.1, 1 a.a. - 683 a.a.) recombinant protein with GST-tag at N-terminal. |
| Purification: | in vitro wheat germ expression system |

Target Details

| | |
|-------------------|---|
| Target: | Fibulin 1 (FBLN1) |
| Alternative Name: | FBLN1 (FBLN1 Products) |
| Background: | Full Gene Name: fibulin 1 Synonyms: FBLN |
| Gene ID: | 2192 |

Application Details

| | |
|--------------------|--|
| Application Notes: | Optimal working dilution should be determined by the investigator. |
| Comment: | Preparation method: in vitro, wheat germ expression system Product Quality tested by: 12.5% SDS-PAGE Stained with Coomassie Blue. |
| Restrictions: | For Research Use only |

Handling

| | |
|------------------|---|
| Buffer: | 50 mM Tris-HCl, 10 mM reduced Glutathione, pH =8.0 in the elution buffer. |
| Handling Advice: | Aliquot to avoid repeated freezing and thawing. |
| Storage: | -80 °C |
| Storage Comment: | Best use within three months from the date of receipt of this protein. |

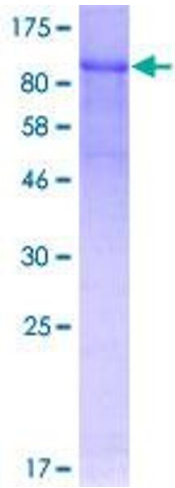


Image 1.