

Datasheet for ABIN1353698

Fibulin 1 Protein (FBLN1) (AA 151-250) (GST tag)



[Go to Product page](#)

1 Image

Overview

Quantity:	10 µg
Target:	Fibulin 1 (FBLN1)
Protein Characteristics:	AA 151-250
Origin:	Human
Source:	Wheat germ
Protein Type:	Recombinant
Purification tag / Conjugate:	This Fibulin 1 protein is labelled with GST tag.
Application:	Western Blotting (WB), ELISA, Antibody Array (AA), Affinity Purification (AP)

Product Details

Purpose:	FBLN1 (Human) Recombinant Protein (Q01)
Sequence:	GDLDVGGGLQE TDKIIEVEEEE QEDPYLNDRC RGGGPCKQQC RDTGDEVVCS CFVGYQLLSD GVSCEDVNEC ITGSHSCLRG ESCINTVGSF RCQRDSSCGT
Characteristics:	Human FBLN1 partial ORF (AAH22497, 151 a.a. - 250 a.a.) recombinant protein with GST-tag at N-terminal.
Purification:	in vitro wheat germ expression system

Target Details

Target:	Fibulin 1 (FBLN1)
Alternative Name:	FBLN1 (FBLN1 Products)

Target Details

Background: Full Gene Name: fibulin 1
Synonyms: FBLN

Gene ID: 2192

Application Details

Application Notes: Optimal working dilution should be determined by the investigator.

Comment: Preparation method: in vitro, wheat germ expression system
Product Quality tested by: 12.5% SDS-PAGE Stained with Coomassie Blue.

Restrictions: For Research Use only

Handling

Buffer: 50 mM Tris-HCl, 10 mM reduced Glutathione, pH =8.0 in the elution buffer.

Handling Advice: Aliquot to avoid repeated freezing and thawing.

Storage: -80 °C

Storage Comment: Best use within three months from the date of receipt of this protein.

Images

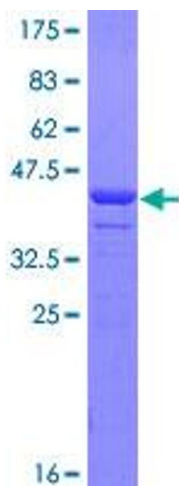


Image 1.