

Datasheet for ABIN1353718  
**KDM2A Protein (AA 742-840) (GST tag)**



[Go to Product page](#)

1 Image

Overview

Quantity:	10 µg
Target:	KDM2A
Protein Characteristics:	AA 742-840
Origin:	Human
Source:	Wheat germ
Protein Type:	Recombinant
Purification tag / Conjugate:	This KDM2A protein is labelled with GST tag.
Application:	Western Blotting (WB), ELISA, Antibody Array (AA), Affinity Purification (AP)

Product Details

Purpose:	FBXL11 (Human) Recombinant Protein (Q01)
Sequence:	GAGPSDHHSA SRDERFKRRQ LLRLQATERT MVREKENNPS GKKELSEVEK AKIRGSYLTV TLQRPTKELH GTSIVPKLQA ITASSANLRH SPRVLVQHC
Characteristics:	Human FBXL11 partial ORF ( NP_036440, 742 a.a. - 840 a.a.) recombinant protein with GST-tag at N-terminal.
Purification:	in vitro wheat germ expression system

Target Details

Target:	KDM2A
Alternative Name:	FBXL11 ( <a href="#">KDM2A Products</a> )

## Target Details

Background:	Full Gene Name: F-box and leucine-rich repeat protein 11 Synonyms: CXXC8,DKFZp434M1735,FBL11,FBL7,FLJ00115,FLJ46431,JHDM1A,KDM2A,KIAA1004,LILINA
Gene ID:	22992
NCBI Accession:	<a href="#">NM_012308</a>
Pathways:	<a href="#">Warburg Effect</a>

## Application Details

Application Notes:	Optimal working dilution should be determined by the investigator.
Comment:	Preparation method: in vitro, wheat germ expression system Product Quality tested by: 12.5% SDS-PAGE Stained with Coomassie Blue.
Restrictions:	For Research Use only

## Handling

Buffer:	50 mM Tris-HCl, 10 mM reduced Glutathione, pH =8.0 in the elution buffer.
Handling Advice:	Aliquot to avoid repeated freezing and thawing.
Storage:	-80 °C
Storage Comment:	Best use within three months from the date of receipt of this protein.

## Images

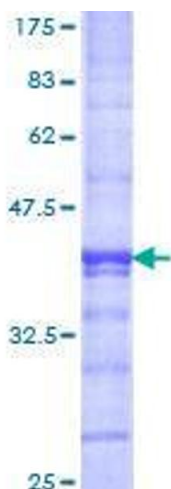


Image 1.