



[Go to Product page](#)

Datasheet for ABIN1353729
FBXL17 Protein (AA 1-369) (GST tag)

1 Image

Overview

Quantity:	25 µg
Target:	FBXL17
Protein Characteristics:	AA 1-369
Origin:	Human
Source:	Wheat germ
Protein Type:	Recombinant
Purification tag / Conjugate:	This FBXL17 protein is labelled with GST tag.
Application:	ELISA, Western Blotting (WB), Antibody Array (AA), Affinity Purification (AP)

Product Details

Purpose:	FBXL17 (Human) Recombinant Protein (P01)
Sequence:	MGHLLSKEPR NRPSQKRPRC CSWCRRRRRPL LRLPRRTPAK VPPQPAAPRS RDCFFRGPCM LCFIVHSPGA PAPAGPEEEP PLSPPPRDGA YAAASSSQHL ARRYAALAAE DCAAAAARRFL LSSAAAAAAA AASASSPASC CKELGLAAAA AWEQQGRSLF LASLGPVRFLL GPAAVQLFR GPTPSAELP TPPEMVCKRK GAGVPACTPC KQPRCGGGGC GGGGGGGGGG GPAGGGASPP RPPDAGCCQA PEQPPQLCP PPSSPTSEGA PTEAGGDAVR AGGTAPLSAQ QQHECGDADC RESPENPCDC HREPPPETPD INQLPPSILL KVGLGERRRD ARFPPPPAPA SEAFSLPLLS AEEGGLAA
Characteristics:	Human FBXL17 full-length ORF (AAH63316.1, 1 a.a. - 369 a.a.) recombinant protein with GST-tag at N-terminal.
Purification:	in vitro wheat germ expression system

Target Details

Target:	FBXL17
Alternative Name:	FBXL17 (FBXL17 Products)
Background:	Full Gene Name: F-box and leucine-rich repeat protein 17 Synonyms: DKFZp434C1715,FBXO13,Fbl17,Fbx13,MGC161422,MGC161424
Gene ID:	64839

Application Details

Application Notes:	Optimal working dilution should be determined by the investigator.
Comment:	Preparation method: in vitro, wheat germ expression system Product Quality tested by: 12.5% SDS-PAGE Stained with Coomassie Blue.
Restrictions:	For Research Use only

Handling

Buffer:	50 mM Tris-HCl, 10 mM reduced Glutathione, pH =8.0 in the elution buffer.
Handling Advice:	Aliquot to avoid repeated freezing and thawing.
Storage:	-80 °C
Storage Comment:	Best use within three months from the date of receipt of this protein.

Images

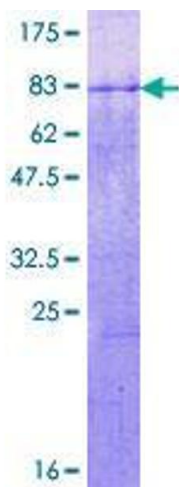


Image 1.