

Datasheet for ABIN1353739
FBXL20 Protein (AA 1-436) (GST tag)



[Go to Product page](#)

1 Image

Overview

Quantity:	10 µg
Target:	FBXL20
Protein Characteristics:	AA 1-436
Origin:	Human
Source:	Wheat germ
Protein Type:	Recombinant
Purification tag / Conjugate:	This FBXL20 protein is labelled with GST tag.
Application:	ELISA, Western Blotting (WB), Antibody Array (AA), Affinity Purification (AP)

Product Details

Purpose:	FBXL20 (Human) Recombinant Protein (P01)
Sequence:	MRRDVNGVTK SRFEMFSNSD EAVINKKLPK ELLLRIFSFL DVVTLCRCAQ VSRAWNVLAL DGSNWQRIDL FDFQRDIEGR VVENISKRCG GFLRKLSLRG CLGVGDNALR TFAQNCRNIE VLNLNGCTKT TDATCTSLSK FCSKLRHLDL ASCTSITNMS LKALSEGCPL LEQLNISWCD QVTKDGIQAL VRGCGGLKAL FLKGCTQLED EALKYIGAHC PELVTLNLQT CLQITDEGLI TICRGCHKLQ SLCASGCSNI TDAILNALGQ NCPRLRILEV ARCSQLTDVG FTTLARNCHE LEKMDLEECV QITDSTLIQL SIHCPRLQVL SLSHCELITD DGIRHLGNGA CAHDQLEVIE LDNCPLITDA SLEHLKSCHS LERIELYDCQ QITRAGIKRL RTHLPNIKVH AYFAPVTPPP SVGGSRQRFC RCCIIL
Characteristics:	Human FBXL20 full-length ORF (AAH07557, 1 a.a. - 436 a.a.) recombinant protein with GST-tag at N-terminal.

Product Details

Purification: in vitro wheat germ expression system

Target Details

Target: FBXL20

Alternative Name: FBXL20 ([FBXL20 Products](#))

Background: Full Gene Name: F-box and leucine-rich repeat protein 20
Synonyms: Fbl2,Fbl20,MGC15482,SCR,SCRAPPER

Gene ID: 84961

Application Details

Application Notes: Optimal working dilution should be determined by the investigator.

Comment: Preparation method: in vitro, wheat germ expression system
Product Quality tested by: 12.5% SDS-PAGE Stained with Coomassie Blue.

Restrictions: For Research Use only

Handling

Buffer: 50 mM Tris-HCl, 10 mM reduced Glutathione, pH =8.0 in the elution buffer.

Handling Advice: Aliquot to avoid repeated freezing and thawing.

Storage: -80 °C

Storage Comment: Best use within three months from the date of receipt of this protein.

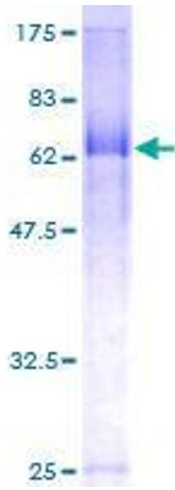


Image 1.