



[Go to Product page](#)

Datasheet for ABIN1353769

FBX015 Protein (AA 1-434) (GST tag)

1 Image

Overview

Quantity:	10 µg
Target:	FBX015
Protein Characteristics:	AA 1-434
Origin:	Human
Source:	Wheat germ
Protein Type:	Recombinant
Purification tag / Conjugate:	This FBX015 protein is labelled with GST tag.
Application:	ELISA, Western Blotting (WB), Antibody Array (AA), Affinity Purification (AP)

Product Details

Purpose:	FBX015 (Human) Recombinant Protein (P01)
Sequence:	MPSEILLKIF SYLDAVSLLC TGCVSRRFYH LANDNFIWIG IYSTAFSPAR SNWKFNSVEK IAMSMSFLSV QDKEAGYWKK EYITKQIASV KAALADILKP VNPYTGLPVK TKEALRIFGL GWAILKEKG GKEYIMEHVD LSINDTSVTV IWYGKKWPCL ASLSTLDLCG MTPVFTDWYK TPTKHLRWH SLIAKYNLISH LTISTMIGCD RLIRIFCLHP GLLVGVWKKE EELAFVMANL HFHHLVERST LGSATIPYEL PPHSPFLDDS PEYGLHGYQL HVDLHSGGVF YLCGTFRNLF TKRGNIEGH VKLIVIHKN NREHLPLIGK VGLSWKTDIF DGCIKSCSMM DVTLLDEHGK PFWCFSSPVC LRSPATPSDS SSFLGQTYNV DYVDAEGRVH VELVWIRETE EYLIVNLVLY LSIAKINHWF GTEY
Characteristics:	Human FBX015 full-length ORF (NP_689889.1, 1 a.a. - 434 a.a.) recombinant protein with GST-tag at N-terminal.

Product Details

Purification: in vitro wheat germ expression system

Target Details

Target: FBX015

Alternative Name: FBX015 ([FBX015 Products](#))

Background: Full Gene Name: F-box protein 15
Synonyms: FBX15,MGC39671

Gene ID: 201456

NCBI Accession: [NM_152676](#)

Application Details

Application Notes: Optimal working dilution should be determined by the investigator.

Comment: Preparation method: in vitro, wheat germ expression system
Product Quality tested by: 12.5% SDS-PAGE Stained with Coomassie Blue.

Restrictions: For Research Use only

Handling

Buffer: 50 mM Tris-HCl, 10 mM reduced Glutathione, pH =8.0 in the elution buffer.

Handling Advice: Aliquot to avoid repeated freezing and thawing.

Storage: -80 °C

Storage Comment: Best use within three months from the date of receipt of this protein.

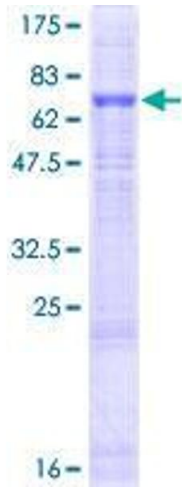


Image 1.