



[Go to Product page](#)

Datasheet for ABIN1353866

## FBXW12 Protein (AA 1-445) (GST tag)

### 1 Image

#### Overview

Quantity:	10 µg
Target:	FBXW12
Protein Characteristics:	AA 1-445
Origin:	Human
Source:	Wheat germ
Protein Type:	Recombinant
Purification tag / Conjugate:	This FBXW12 protein is labelled with GST tag.
Application:	ELISA, Western Blotting (WB), Antibody Array (AA), Affinity Purification (AP)

#### Product Details

Purpose:	FBXW12 (Human) Recombinant Protein (P01)
Sequence:	<p>MSPTHQIQDP KHWNRIADSD YLWRSLSLQR WDCSNFTNQH LGTHTWKQFF LHQRRKELRL ALAQPHNFIY KVTKNIAFET ELAYLSGNRL TVDEQEKSII CSVSPKQELC AWDVQEGTMI WSSPVQEFHF SNLVTLPMQH LAITMDRKKT IKVWNCQDRD ALAVLPMPQP CYCMEAYLTK DGPFLMVGDA AGDIYFTFLP GLRDVSKVTA FQYGIVLLHC SPDKKWVFAC GTYSRTLTPQV FLTESLLRPS EGSDDLSTLL PHKLCASACW TPKVKNRITL MSQSSTGKKT EFITFDLTTK KTGGQTVIQA YEIASFQVAA HLCPIWMGA SDGYMIVFTS GPYLLLFSIT GFLLQRFEDH QAAINNFVVD PCYVLTTSN SVHVYMWEEG GRHPYLRSCC HLENTWHDHT TDSCISSVMC DNASIVLRVR KVS DSSILVM YSLNT</p>
Characteristics:	Human FBXW12 full-length ORF (AAI01306.1, 1 a.a. - 445 a.a.) recombinant protein with GST-tag at N-terminal.

## Product Details

---

Purification: in vitro wheat germ expression system

## Target Details

---

Target: FBXW12

Alternative Name: FBXW12 ([FBXW12 Products](#))

Background: Full Gene Name: F-box and WD repeat domain containing 12  
Synonyms: FBXO12,FBXO35,Fbw12,MGC120385,MGC120386,MGC120387

Gene ID: 285231

## Application Details

---

Application Notes: Optimal working dilution should be determined by the investigator.

Comment: Preparation method: in vitro, wheat germ expression system  
Product Quality tested by: 12.5% SDS-PAGE Stained with Coomassie Blue.

Restrictions: For Research Use only

## Handling

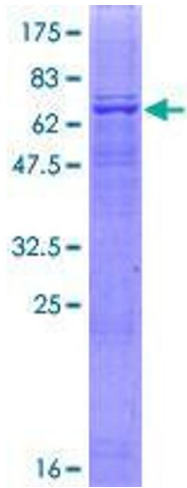
---

Buffer: 50 mM Tris-HCl, 10 mM reduced Glutathione, pH =8.0 in the elution buffer.

Handling Advice: Aliquot to avoid repeated freezing and thawing.

Storage: -80 °C

Storage Comment: Best use within three months from the date of receipt of this protein.



**Image 1.**