

Datasheet for ABIN1353868  
**FBXW12 Protein (AA 265-354) (GST tag)**



[Go to Product page](#)

1 Image

Overview

Quantity:	10 µg
Target:	FBXW12
Protein Characteristics:	AA 265-354
Origin:	Human
Source:	Wheat germ
Protein Type:	Recombinant
Purification tag / Conjugate:	This FBXW12 protein is labelled with GST tag.
Application:	ELISA, Western Blotting (WB), Antibody Array (AA), Affinity Purification (AP)

Product Details

Purpose:	FBXW12 (Human) Recombinant Protein (Q01)
Sequence:	LLRPSEGSDP LSTFLPHKLC ASACWTPKVK NRITLMSQSS TGKKTEFITF DLTTKKTGGQ TVIQAYEIAS FQVAHLKCP IWMGASDGYM
Characteristics:	Human FBXW12 partial ORF ( NP_996985.1, 265 a.a. - 354 a.a.) recombinant protein with GST-tag at N-terminal.
Purification:	in vitro wheat germ expression system

Target Details

Target:	FBXW12
Alternative Name:	FBXW12 ( <a href="#">FBXW12 Products</a> )

## Target Details

Background:	Full Gene Name: F-box and WD repeat domain containing 12 Synonyms: FBX012,FBX035,Fbw12,MGC120385,MGC120386,MGC120387
Gene ID:	285231
NCBI Accession:	<a href="#">NM_207102</a>

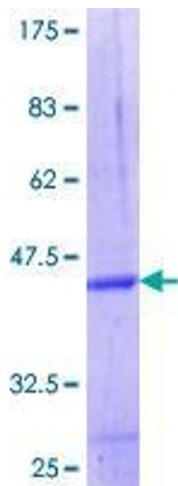
## Application Details

Application Notes:	Optimal working dilution should be determined by the investigator.
Comment:	Preparation method: in vitro, wheat germ expression system Product Quality tested by: 12.5% SDS-PAGE Stained with Coomassie Blue.
Restrictions:	For Research Use only

## Handling

Buffer:	50 mM Tris-HCl, 10 mM reduced Glutathione, pH =8.0 in the elution buffer.
Handling Advice:	Aliquot to avoid repeated freezing and thawing.
Storage:	-80 °C
Storage Comment:	Best use within three months from the date of receipt of this protein.

## Images



**Image 1.**