



Datasheet for ABIN1353873

FBXW4P1 Protein (AA 31-130) (GST tag)



[Go to Product page](#)

1 Image

Overview

Quantity:	10 µg
Target:	FBXW4P1
Protein Characteristics:	AA 31-130
Origin:	Human
Source:	Wheat germ
Protein Type:	Recombinant
Purification tag / Conjugate:	This FBXW4P1 protein is labelled with GST tag.
Application:	Antibody Array (AA), Affinity Purification (AP), ELISA, Western Blotting (WB)

Product Details

Purpose:	SHFM3P1 (Human) Recombinant Protein (Q01)
Sequence:	EVLLHMCYSY LDMRALGRLA QVYRWLWHFT NCDLLRRQIA WASLNSGFTR LGTNLMTSVP VKVSQNWIVG CCREGILLKW RCSQMPWMQL EDDALYISQA
Characteristics:	Human SHFM3P1 partial ORF (AAF04527, 31 a.a. - 130 a.a.) recombinant protein with GST-tag at N-terminal.
Purification:	in vitro wheat germ expression system

Target Details

Target:	FBXW4P1
Alternative Name:	FBXW4P1 (FBXW4P1 Products)

Target Details

Background:	Full Gene Name: F-box and WD repeat domain containing 4 pseudogene 1 Synonyms: FBW3,FBXW3,SHFM3P1
Gene ID:	26226

Application Details

Application Notes:	Optimal working dilution should be determined by the investigator.
Comment:	Preparation method: in vitro, wheat germ expression system Product Quality tested by: 12.5% SDS-PAGE Stained with Coomassie Blue.
Restrictions:	For Research Use only

Handling

Buffer:	50 mM Tris-HCl, 10 mM reduced Glutathione, pH =8.0 in the elution buffer.
Handling Advice:	Aliquot to avoid repeated freezing and thawing.
Storage:	-80 °C
Storage Comment:	Best use within three months from the date of receipt of this protein.

Images

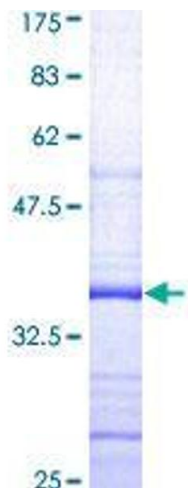


Image 1.