



[Go to Product page](#)

Datasheet for ABIN1353875

FBXW5 Protein (AA 1-159) (GST tag)

1 Image

Overview

Quantity:	10 µg
Target:	FBXW5
Protein Characteristics:	AA 1-159
Origin:	Human
Source:	Wheat germ
Protein Type:	Recombinant
Purification tag / Conjugate:	This FBXW5 protein is labelled with GST tag.
Application:	ELISA, Western Blotting (WB), Antibody Array (AA), Affinity Purification (AP)

Product Details

Purpose:	FBXW5 (Human) Recombinant Protein (P01)
Sequence:	MGLSPDNRYL YVNSRAWPNG AVVADPMQPP PIAEEIDLLV FDLKTMREVR RALRAHRAYT PNDECFIFL DVSRDFVASG AEDRHGYIWD RHYNICLARL RHEDVVNSV V FSPQEQELL TASDDATIKA WRSPRTMRVL QAPRPRPRTF FSWLASQRR
Characteristics:	Human FBXW5 full-length ORF (AAH00850.1, 1 a.a. - 159 a.a.) recombinant protein with GST-tag at N-terminal.
Purification:	in vitro wheat germ expression system

Target Details

Target:	FBXW5
Alternative Name:	FBXW5 (FBXW5 Products)

Target Details

Background:	Full Gene Name: F-box and WD repeat domain containing 5 Synonyms: DKFZp434B205,Fbw5,MGC20962,RP11-229P13.10
Gene ID:	54461

Application Details

Application Notes:	Optimal working dilution should be determined by the investigator.
Comment:	Preparation method: in vitro, wheat germ expression system Product Quality tested by: 12.5% SDS-PAGE Stained with Coomassie Blue.
Restrictions:	For Research Use only

Handling

Buffer:	50 mM Tris-HCl, 10 mM reduced Glutathione, pH =8.0 in the elution buffer.
Handling Advice:	Aliquot to avoid repeated freezing and thawing.
Storage:	-80 °C
Storage Comment:	Best use within three months from the date of receipt of this protein.

Images

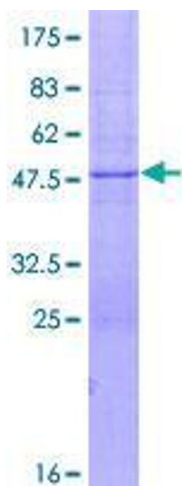


Image 1.