

Datasheet for ABIN1353881

## FBXW8 Protein (AA 499-598) (GST tag)



[Go to Product page](#)

### 1 Image

#### Overview

Quantity:	10 µg
Target:	FBXW8
Protein Characteristics:	AA 499-598
Origin:	Human
Source:	Wheat germ
Protein Type:	Recombinant
Purification tag / Conjugate:	This FBXW8 protein is labelled with GST tag.
Application:	ELISA, Western Blotting (WB), Antibody Array (AA), Affinity Purification (AP)

#### Product Details

Purpose:	FBXW8 (Human) Recombinant Protein (Q01)
Sequence:	VWDYRMNQKL WEVYSGHPVQ HISFSSHSLI TANVPYQTVM RNADLDSFTT HRRHRGLIRA YEFAVDQLAF QSPLPVCRSS CDAMATHYYD LALAFPYNHV
Characteristics:	Human FBXW8 partial ORF ( NP_699179, 499 a.a. - 598 a.a.) recombinant protein with GST-tag at N-terminal.
Purification:	in vitro wheat germ expression system

#### Target Details

Target:	FBXW8
Alternative Name:	FBXW8 ( <a href="#">FBXW8 Products</a> )

## Target Details

Background:	Full Gene Name: F-box and WD repeat domain containing 8 Synonyms: FBW6,FBW8,FBX29,FBXO29,FBXW6,MGC33534
Gene ID:	26259
NCBI Accession:	<a href="#">NM_153348</a>

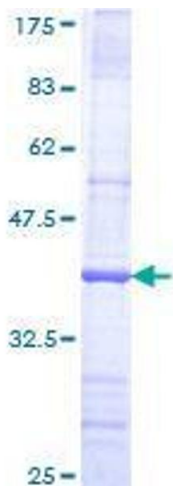
## Application Details

Application Notes:	Optimal working dilution should be determined by the investigator.
Comment:	Preparation method: in vitro, wheat germ expression system Product Quality tested by: 12.5% SDS-PAGE Stained with Coomassie Blue.
Restrictions:	For Research Use only

## Handling

Buffer:	50 mM Tris-HCl, 10 mM reduced Glutathione, pH =8.0 in the elution buffer.
Handling Advice:	Aliquot to avoid repeated freezing and thawing.
Storage:	-80 °C
Storage Comment:	Best use within three months from the date of receipt of this protein.

## Images



**Image 1.**