

Datasheet for ABIN1353905
FCHSD1 Protein (AA 1-409) (GST tag)



[Go to Product page](#)

1 Image

Overview

Quantity:	10 µg
Target:	FCHSD1
Protein Characteristics:	AA 1-409
Origin:	Human
Source:	Wheat germ
Protein Type:	Recombinant
Purification tag / Conjugate:	This FCHSD1 protein is labelled with GST tag.
Application:	ELISA, Western Blotting (WB), Antibody Array (AA), Affinity Purification (AP)

Product Details

Purpose:	FCHSD1 (Human) Recombinant Protein (P01)
Sequence:	MDSRTVFGAW RCLLDATVAG GQTRLQASDR YRDLAGGTGR SAKEQVLRKG TENLQRAQAE VLQSVRELSR SRKLYGQRER VWALAQEKAA DVQARLNRS D HGIFHSRTSL QKLSTKLSAQ SAQYSQQLQA ARNEYLLNLV ATNAHLDHYY QEELPALLKA LVSEELSEHLR DPLTSLSHTE LEAAEVILEH AHRGEQTTSQ VSWEQDLKLF LQEPGVFSPT PPQQFQAGT DQVCVLEWGA EGVAGKSGLE KEVQRLTSRA ARDYKIQNHG HRVLQRLEQR RQQASEREAP SIEQRLQEV R ESIRRAQVSQ VKGAARLALL QGAGLDVERW LKPAMTQAQD EVEQERRLSE ARLSQRDLSP TAEDAELSDF EEC EETGELF EEPAPQALAT RALPCPAHV V FRYQGVRMS
Characteristics:	Human FCHSD1 full-length ORF (AAH47016, 1 a.a. - 409 a.a.) recombinant protein with GST-tag at N-terminal.
Purification:	in vitro wheat germ expression system

Target Details

Target:	FCHSD1
Alternative Name:	FCHSD1 (FCHSD1 Products)
Background:	Full Gene Name: FCH and double SH3 domains 1 Synonyms: FLJ00007,NWK2
Gene ID:	89848

Application Details

Application Notes:	Optimal working dilution should be determined by the investigator.
Comment:	Preparation method: in vitro, wheat germ expression system Product Quality tested by: 12.5% SDS-PAGE Stained with Coomassie Blue.
Restrictions:	For Research Use only

Handling

Buffer:	50 mM Tris-HCl, 10 mM reduced Glutathione, pH =8.0 in the elution buffer.
Handling Advice:	Aliquot to avoid repeated freezing and thawing.
Storage:	-80 °C
Storage Comment:	Best use within three months from the date of receipt of this protein.

Images

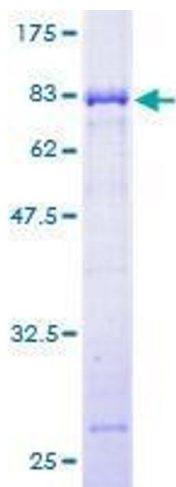


Image 1.