



[Go to Product page](#)

Datasheet for ABIN1353907

## FCHSD2 Protein (AA 1-684) (GST tag)

### 1 Image

#### Overview

Quantity:	25 µg
Target:	FCHSD2
Protein Characteristics:	AA 1-684
Origin:	Human
Source:	Wheat germ
Protein Type:	Recombinant
Purification tag / Conjugate:	This FCHSD2 protein is labelled with GST tag.
Application:	ELISA, Western Blotting (WB), Antibody Array (AA), Affinity Purification (AP)

#### Product Details

Purpose:	FCHSD2 (Human) Recombinant Protein (P01)
Sequence:	<p>MQKLASQYLK RDWPGVKADD RNDYRSMYPV WKSFLGTMQ VAQSRMNICE NYKNFISEPA</p> <p>RTVRSLEKEQQ LKRCVDQLTK IQTELQETVK DLAGGKKKYF ETEQMAHAVR EKADIEAKSK</p> <p>LSLFQSRISL QKASVKLKAR RSECNSKATH ARNDYLLTLA AANAHQDRYY QTDLVNIMKA</p> <p>LDGNVYDHLK DYLIAFSRTE LETCQAVQNT FQFLENSSK VVRDYNLQLF LQENAVFHKP</p> <p>QPFQFQPCDS DTSRQLESET GTTEEHS LNK EARKWATRVA REHKNIHVHQ RVLNDLECHG</p> <p>AAVSEQSRAE LEQKIDEARE NIRKAEIKL KAEARLDLLK QIGVSVDTWL KSAMNQVMEE</p> <p>LENERWARPP AVTSNGTLHS LNADTEREEG EEFEDNMDVF DDSSSSPSGT LRNYPLTCKV</p> <p>VYSYKASQPD ELTIEEHEVL EVIEDGDMED WVKARNKVGQ VGYVPEKYLQ FPTSNSLLSM</p> <p>LQSLAALDSR SHTSSNSTEA ELVSGSLNGD ASVCFVKALY DYEGQTDDDEL SFPEGAIIRI</p> <p>LNKENQDDDG FWEGEFNRI GVFPSVLEE LSASENGDTP WMREIQISPS PKPHASLPPL</p> <p>PLYDQPPSSP YPSPDKRSSL YFPRSPSANE KSLHAESPGF SQASRHTPET SYGKLRPVRA</p>

## Product Details

---

APPPPTQNHR RPAEKIEDVE ITLV

Characteristics: Human FCHSD2 full-length ORF ( NP\_055639.1, 1 a.a. - 684 a.a.) recombinant protein with GST-tag at N-terminal.

Purification: in vitro wheat germ expression system

## Target Details

---

Target: FCHSD2

Alternative Name: FCHSD2 ([FCHSD2 Products](#))

Background: Full Gene Name: FCH and double SH3 domains 2  
Synonyms: KIAA0769,NWK,SH3MD3

Gene ID: 9873

NCBI Accession: [NM\\_014824](#)

## Application Details

---

Application Notes: Optimal working dilution should be determined by the investigator.

Comment: Preparation method: in vitro, wheat germ expression system  
Product Quality tested by: 12.5% SDS-PAGE Stained with Coomassie Blue.

Restrictions: For Research Use only

## Handling

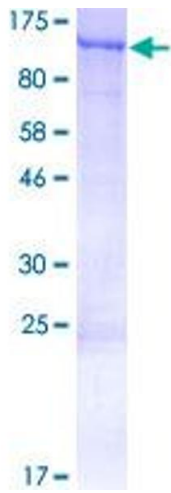
---

Buffer: 50 mM Tris-HCl, 10 mM reduced Glutathione, pH =8.0 in the elution buffer.

Handling Advice: Aliquot to avoid repeated freezing and thawing.

Storage: -80 °C

Storage Comment: Best use within three months from the date of receipt of this protein.



**Image 1.**