

Datasheet for ABIN135391
anti-MHC Class II antibody (PE)[Go to Product page](#)

1 Image

Overview

Quantity:	0.1 mg
Target:	MHC Class II (MHC2)
Reactivity:	Mouse
Host:	Rat
Clonality:	Monoclonal
Conjugate:	This MHC Class II antibody is conjugated to PE
Application:	Flow Cytometry (FACS)

Product Details

Immunogen:	Unknown
Clone:	NIMR-4
Isotype:	IgG2b
Specificity:	Mouse MHC Class II
Characteristics:	Rat Anti-Mouse MHC Class II-PE
Purification:	The antibody is affinity-purified from rabbit antiserum by affinity chromatography using epitope-specific immunogen.

Target Details

Target:	MHC Class II (MHC2)
Alternative Name:	MHC Class II (MHC2 Products)

Application Details

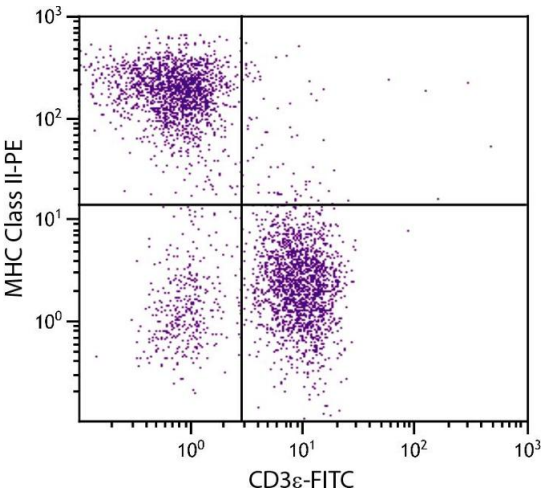
Application Notes:	<ul style="list-style-type: none">• Applications: FC - Quality tested , IHC-FS - Reported in literature , ICC - Reported in literature , Sep - Reported in literature• Working Dilutions: Flow Cytometry Purified (UNLB) antibody 1 g/106 cells FITC and BIOT conjugates 1 g/106 cells PE, APC, and SPRD conjugates 0.1 g/106 cells For flow cytometry, the suggested use of these reagents is in a final volume of 100 L
--------------------	--

Sample Volume:	1 mL
Restrictions:	For Research Use only

Handling

Concentration:	0.1 mg/mL
Buffer:	0.1 mg in 1.0 mL or 0.2 mg in 2.0 mL of PBS/Sodium azide and a stabilizing agent
Preservative:	Sodium azide
Precaution of Use:	This product contains Sodium azide: a POISONOUS AND HAZARDOUS SUBSTANCE which should be handled by trained staff only.
Handling Advice:	Do not freeze! Protect conjugated products from light. Each reagent is stable for the period shown on the bottle label if stored as directed.
Storage:	4 °C
Storage Comment:	Store at 2-8°C

Images



Flow Cytometry

Image 1. BALB/c mouse splenocytes were stained with Rat Anti-Mouse MHC Class II-PE.