



[Go to Product page](#)

Datasheet for ABIN1353910

## FCN1 Protein (AA 201-300) (GST tag)

### 1 Image

#### Overview

Quantity:	10 µg
Target:	FCN1
Protein Characteristics:	AA 201-300
Origin:	Human
Source:	Wheat germ
Protein Type:	Recombinant
Purification tag / Conjugate:	This FCN1 protein is labelled with GST tag.
Application:	Western Blotting (WB), ELISA, Antibody Array (AA), Affinity Purification (AP)

#### Product Details

Purpose:	FCN1 (Human) Recombinant Protein (Q01)
Sequence:	SSELRVDLVD FEGNHQFAKY KSFKVADEAE KYKLVLGAFV GGSAGNSLTG HNNNFFSTKD QDNDVSSSNC AEKFQGAWWY ADCHASNLNG LYLMGPHEYSY
Characteristics:	Human FCN1 partial ORF ( NP_001994, 201 a.a. - 300 a.a.) recombinant protein with GST-tag at N-terminal.
Purification:	in vitro wheat germ expression system

#### Target Details

Target:	FCN1
Alternative Name:	FCN1 ( <a href="#">FCN1 Products</a> )

## Target Details

Background:	Full Gene Name: ficolin (collagen/fibrinogen domain containing) 1 Synonyms: FCNM
Gene ID:	2219
NCBI Accession:	<a href="#">NM_002003</a>
Pathways:	<a href="#">Complement System</a>

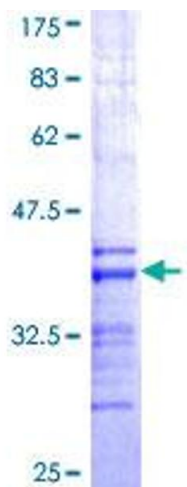
## Application Details

Application Notes:	Optimal working dilution should be determined by the investigator.
Comment:	Preparation method: in vitro, wheat germ expression system Product Quality tested by: 12.5% SDS-PAGE Stained with Coomassie Blue.
Restrictions:	For Research Use only

## Handling

Buffer:	50 mM Tris-HCl, 10 mM reduced Glutathione, pH =8.0 in the elution buffer.
Handling Advice:	Aliquot to avoid repeated freezing and thawing.
Storage:	-80 °C
Storage Comment:	Best use within three months from the date of receipt of this protein.

## Images



**Image 1.**