



Datasheet for ABIN135393
anti-MHC Class II I-Ab antibody



[Go to Product page](#)

1 Image

Overview

Quantity:	0.5 mg
Target:	MHC Class II I-Ab
Reactivity:	Mouse
Host:	Mouse
Clonality:	Monoclonal
Conjugate:	This MHC Class II I-Ab antibody is un-conjugated
Application:	Flow Cytometry (FACS)

Product Details

Immunogen:	C3H.SW mouse splenocytes
Clone:	25-9-3
Isotype:	IgM
Specificity:	Mouse I-Ab
Characteristics:	Mouse Anti-Mouse I-Ab-UNLB
Purification:	Purified

Target Details

Target:	MHC Class II I-Ab
Abstract:	MHC Class II I-Ab Products

Application Details

Application Notes:	<ul style="list-style-type: none">• Applications: FC - Quality tested IHC-FS - Reported in literature , CMCD - Reported in literature• Working Dilutions: Flow Cytometry FLMA and BIOT conjugates 1 g/106 cells PE conjugate 0.2 g/106 cells For flow cytometry, the suggested use of these reagents is in a final volume of 100 L
--------------------	---

Comment: Complement-dependent cytotoxicity assays

Sample Volume: 1 mL

Restrictions: For Research Use only

Handling

Concentration: 0.5 mg/mL

Buffer: 0.5 mg of purified immunoglobulin in 1.0 mL of borate buffered saline, pH 8.2. No preservatives or amine-containing buffer salts added

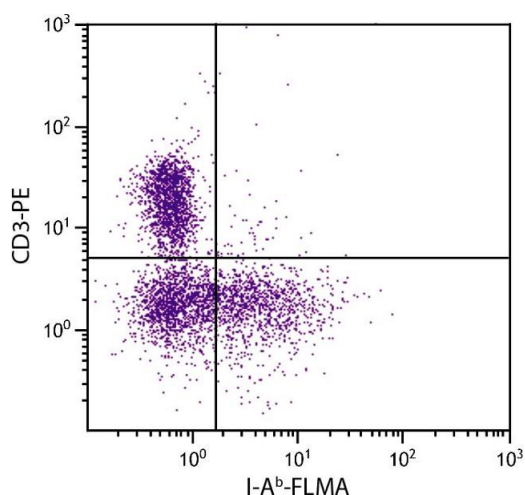
Preservative: Without preservative

Handling Advice: Each reagent is stable for the period shown on the bottle label if stored as directed.

Storage: 4 °C

Storage Comment: Store at 2-8°C

Images



Flow Cytometry

Image 1. C57BL/6 mouse splenocytes were stained with Mouse Anti-Mouse I-Ab-FLMA and Rat Anti-Mouse CD3ε-PE.