



[Go to Product page](#)

Datasheet for ABIN1353952

FEM1C Protein (AA 1-617) (GST tag)

1 Image

Overview

Quantity:	10 µg
Target:	FEM1C
Protein Characteristics:	AA 1-617
Origin:	Human
Source:	Wheat germ
Protein Type:	Recombinant
Purification tag / Conjugate:	This FEM1C protein is labelled with GST tag.
Application:	ELISA, Western Blotting (WB), Antibody Array (AA), Affinity Purification (AP)

Product Details

Purpose:	FEM1C (Human) Recombinant Protein (P01)
Sequence:	MDLKTAVFNA ARDGKLRLLT KLLASKSKEE VSSLISEKTN GATPLLMAAR YGHLDMVEFL LEQCSASIEV GGSVNFDFGET IEGAPPLWAA SAAGHLKVVQ SLLNHGASVN NTTLTNSTPL RAACFDGHLE IVKYLVEHKA DLEVSNRHHG TCLMISCYKG HKEIAQYLLE KGADVNRKSV KGNTALHDCA ESGSLDIMKM LLMYCAKMEK DGYGMTPLLS ASVTGHTNIV DFLTHHAQTS KTERINALEL LGATFVDKKR DLLGALKYWK KAMNMRYSDR TNIISKVPVQ TLIMAYDYAK EVNSAELEG LIADPDEMRRM QALLIRERIL GPSHPDTSYY IRYRGAVYAD SGNFKRCINL WKYALDMQQS NLDPLSPMTA SLLSFAELF SFMLQDRAKG LLGTTVTFDD LMGILCKSVL EIERAIKQTQ CPADPLQLNK ALSIILHLIC LLEKVPCTLE QDHFKKQTIY RFLKLHPRGK NNFSPLHLAV DKNTTCVGRY PVCKFPSLQV TAILIECGAD VNVDRSDDNS PLHIAALNNH PDIMNLLIKS GAHFDATNLH KQTASDLLDE KEIAKNLIQP INHTTLQCLA ARVIVNHRIY YKGHIPEKLE TFVSLHR

Product Details

Characteristics:	Human FEM1C full-length ORF (NP_064562.1, 1 a.a. - 617 a.a.) recombinant protein with GST-tag at N-terminal.
Purification:	in vitro wheat germ expression system

Target Details

Target:	FEM1C
Alternative Name:	FEM1C (FEM1C Products)
Background:	Full Gene Name: fem-1 homolog c (C. elegans) Synonyms: EUROIMAGE686608,EUROIMAGE783647,FEM1A,KIAA1785
Gene ID:	56929
NCBI Accession:	NM_020177

Application Details

Application Notes:	Optimal working dilution should be determined by the investigator.
Comment:	Preparation method: in vitro, wheat germ expression system Product Quality tested by: 12.5% SDS-PAGE Stained with Coomassie Blue.
Restrictions:	For Research Use only

Handling

Buffer:	50 mM Tris-HCl, 10 mM reduced Glutathione, pH =8.0 in the elution buffer.
Handling Advice:	Aliquot to avoid repeated freezing and thawing.
Storage:	-80 °C
Storage Comment:	Best use within three months from the date of receipt of this protein.

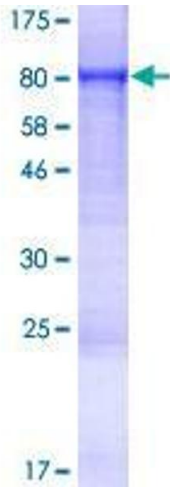


Image 1.