



[Go to Product page](#)

Datasheet for ABIN1353957

## FERD3L Protein (AA 1-167) (GST tag)

### 1 Image

#### Overview

Quantity:	10 µg
Target:	FERD3L
Protein Characteristics:	AA 1-167
Origin:	Human
Source:	Wheat germ
Protein Type:	Recombinant
Purification tag / Conjugate:	This FERD3L protein is labelled with GST tag.
Application:	ELISA, Western Blotting (WB), Antibody Array (AA), Affinity Purification (AP)

#### Product Details

Purpose:	FERD3L (Human) Recombinant Protein (P01)
Sequence:	MAAYPESCVD TTVLDFVADL SLASPRRPLL CDFAPGVSLG DPALALREGR PRRMARFEEG DPEEEEECEVD QGDGEEEEEE EERGRGVSLG GRPKRKRKIT YAQRQAANIR ERKRMFNLNE AFDQLRRKVP TFAYEKRLSR IETLRLAIVY ISFMTELLES CEKKESG
Characteristics:	Human FERD3L full-length ORF ( AAI01136.1, 1 a.a. - 167 a.a.) recombinant protein with GST-tag at N-terminal.
Purification:	in vitro wheat germ expression system

#### Target Details

Target:	FERD3L
Alternative Name:	FERD3L ( <a href="#">FERD3L Products</a> )

## Target Details

Background:	Full Gene Name: Fer3-like (Drosophila) Synonyms: MGC119861,N-TWIST,NATO3,NTWIST,bHLHa31
Gene ID:	222894

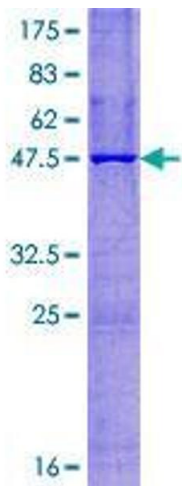
## Application Details

Application Notes:	Optimal working dilution should be determined by the investigator.
Comment:	Preparation method: in vitro, wheat germ expression system Product Quality tested by: 12.5% SDS-PAGE Stained with Coomassie Blue.
Restrictions:	For Research Use only

## Handling

Buffer:	50 mM Tris-HCl, 10 mM reduced Glutathione, pH =8.0 in the elution buffer.
Handling Advice:	Aliquot to avoid repeated freezing and thawing.
Storage:	-80 °C
Storage Comment:	Best use within three months from the date of receipt of this protein.

## Images



**Image 1.**