



[Go to Product page](#)

Datasheet for ABIN135401

anti-MHC Class II I-Ek antibody (Biotin)

1 Image

Overview

Quantity:	0.5 mg
Target:	MHC Class II I-Ek
Reactivity:	Mouse
Host:	Mouse
Clonality:	Monoclonal
Conjugate:	This MHC Class II I-Ek antibody is conjugated to Biotin
Application:	Flow Cytometry (FACS)

Product Details

Immunogen:	C3H mouse skin graft and splenocytes
Clone:	17-3-3S
Isotype:	IgG2a
Specificity:	Mouse I-Ek
Characteristics:	Mouse Anti-Mouse I-Ek-BIOT
Purification:	Protein A chromatography

Target Details

Target:	MHC Class II I-Ek
Abstract:	MHC Class II I-Ek Products

Application Details

Application Notes:	<ul style="list-style-type: none">• Applications: FC - Quality tested , IHC-FS - Reported in literature , CMCD - Reported in literature• Working Dilutions: Flow Cytometry FITC and BIOT conjugates 1 g/106 cells PE conjugate 0.2 g/106 cells For flow cytometry, the suggested use of these reagents is in a final volume of 100 L
--------------------	---

Comment: Complement-mediated cytotoxicity

Sample Volume: 1 mL

Restrictions: For Research Use only

Handling

Concentration: 0.5 mg/mL

Buffer: 0.5 mg in 1.0 mL of PBS/Sodium azide

Preservative: Sodium azide

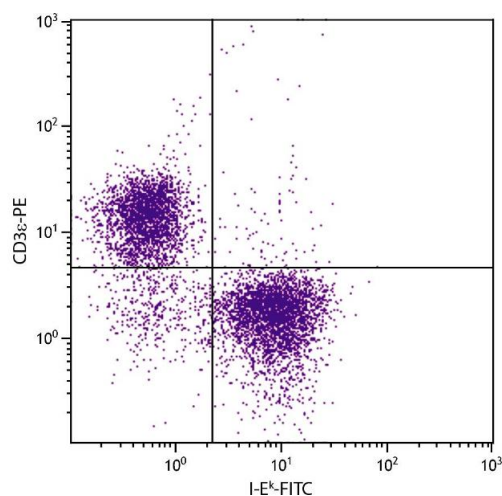
Precaution of Use: This product contains Sodium azide: a POISONOUS AND HAZARDOUS SUBSTANCE which should be handled by trained staff only.

Handling Advice: **Protect conjugated products from light.**
Each reagent is stable for the period shown on the bottle label if stored as directed.

Storage: 4 °C

Storage Comment: Store at 2-8°C

Validation report #101185 for Enzyme Immunoassay (EIA)



Flow Cytometry

Image 1. AKR mouse splenocytes were stained with Mouse Anti-Mouse I-Eκ-FITC.