



[Go to Product page](#)

Datasheet for ABIN135402

anti-MHC Class II I-Ek antibody (PE)

1 Image

Overview

Quantity:	0.1 mg
Target:	MHC Class II I-Ek
Reactivity:	Mouse
Host:	Mouse
Clonality:	Monoclonal
Conjugate:	This MHC Class II I-Ek antibody is conjugated to PE
Application:	Flow Cytometry (FACS)

Product Details

Immunogen:	C3H mouse skin graft and splenocytes
Clone:	17-3-3S
Isotype:	IgG2a
Specificity:	Mouse I-Ek
Characteristics:	Mouse Anti-Mouse I-Ek-PE
Purification:	Protein A affinity column

Target Details

Target:	MHC Class II I-Ek
Abstract:	MHC Class II I-Ek Products

Application Details

Application Notes:

- **Applications:** FC - Quality tested , IHC-FS - Reported in literature , CMCD - Reported in literature
- **Working Dilutions:** Flow Cytometry FITC and BIOT conjugates 1 g/106 cells PE conjugate 0.2 g/106 cells For flow cytometry, the suggested use of these reagents is in a final volume of 100 L

Comment: Complement-mediated cytotoxicity

Sample Volume: 1 mL

Restrictions: For Research Use only

Handling

Concentration: 0.1 mg/mL

Buffer: 0.1 mg in 1.0 mL of PBS/Sodium azide and a stabilizing agent

Preservative: Sodium azide

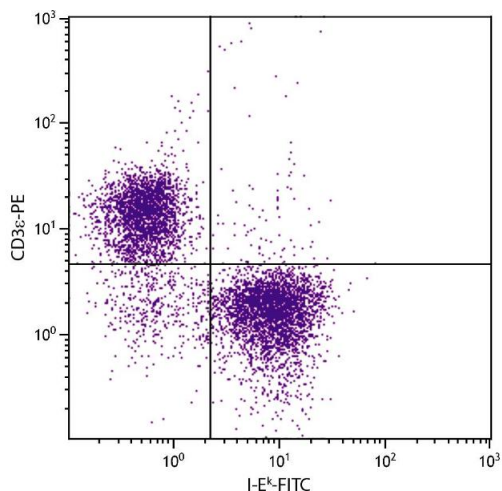
Precaution of Use: This product contains Sodium azide: a POISONOUS AND HAZARDOUS SUBSTANCE which should be handled by trained staff only.

Handling Advice: **Do not freeze!**
Protect conjugated products from light.
Each reagent is stable for the period shown on the bottle label if stored as directed.

Storage: 4 °C

Storage Comment: Store at 2-8°C

Validation report #101185 for Enzyme Immunoassay (EIA)



Flow Cytometry

Image 1. AKR mouse splenocytes were stained with Mouse Anti-Mouse I-Ek-FITC.