

Datasheet for ABIN1354026
FGFBP2 Protein (AA 1-223) (GST tag)



[Go to Product page](#)

1 Image

Overview

Quantity:	25 µg
Target:	FGFBP2
Protein Characteristics:	AA 1-223
Origin:	Human
Source:	Wheat germ
Protein Type:	Recombinant
Purification tag / Conjugate:	This FGFBP2 protein is labelled with GST tag.
Application:	ELISA, Western Blotting (WB), Antibody Array (AA), Affinity Purification (AP)

Product Details

Purpose:	FGFBP2 (Human) Recombinant Protein (P01)
Sequence:	MKFVPCLLLV TLSCLGTLGQ APRQKQGSTG EEFHFQTGGR DSCTMRPSSL GQGAGEVWLR VDCRNTDQTY WCEYRGQPSM CQAFAADPKP YWNQALQELR RLHHACQGAP VLRPSVCREA GPQAHMQQVT SSLKGSPEPN QQPEAGTPSL RPKATVKLTE ATQLGKDSME ELGKAKPTTR PTAKPTQPGP RPGGNEEAKK KAWEHCWKPF QALCAFLISF FRG
Characteristics:	Human FGFBP2 full-length ORF (NP_114156.1, 1 a.a. - 223 a.a.) recombinant protein with GST-tag at N-terminal.
Purification:	in vitro wheat germ expression system

Target Details

Target:	FGFBP2
---------	--------

Target Details

Alternative Name:	FGFBP2 (FGFBP2 Products)
Background:	Full Gene Name: fibroblast growth factor binding protein 2 Synonyms: HBP17RP,KSP37
Gene ID:	83888
NCBI Accession:	NM_031950

Application Details

Application Notes:	Optimal working dilution should be determined by the investigator.
Comment:	Preparation method: in vitro, wheat germ expression system Product Quality tested by: 12.5% SDS-PAGE Stained with Coomassie Blue.
Restrictions:	For Research Use only

Handling

Buffer:	50 mM Tris-HCl, 10 mM reduced Glutathione, pH =8.0 in the elution buffer.
Handling Advice:	Aliquot to avoid repeated freezing and thawing.
Storage:	-80 °C
Storage Comment:	Best use within three months from the date of receipt of this protein.

Images

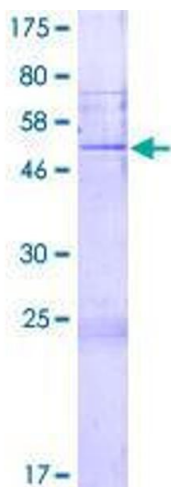


Image 1.