

Datasheet for ABIN1354054
FGGY Protein (AA 1-439) (GST tag)



[Go to Product page](#)

1 Image

Overview

Quantity:	10 µg
Target:	FGGY
Protein Characteristics:	AA 1-439
Origin:	Human
Source:	Wheat germ
Protein Type:	Recombinant
Purification tag / Conjugate:	This FGGY protein is labelled with GST tag.
Application:	ELISA, Western Blotting (WB), Antibody Array (AA), Affinity Purification (AP)

Product Details

Purpose:	FLJ10986 (Human) Recombinant Protein (P01)
Sequence:	MWLDHRAVSQ VNRINETKHS VLQYVGGVMS VEMQAPKLLW LKENLREICW DKAGHFFDLP DFLSWKATGV TARSLCSLVC KWTYSAEKGW DDSFWKMIGL EDFVADNYSK IGNQVLPPGA SLGNGLTPEA ARDLGLLPGI AVAASLIDAH AGGLGVIGAD VRGHGLICEG QPVT SRLAVI CGTSSCHMGI SKDPIFVPGV WGPYFSAMVP GFWLNEGGQS VTGKLI DHMV QGHAAFP ELQ VKATARCQSI YAYLN SHLDL IKKAQPVGFL TVDLHVWPDF HG NRSPLADL TLKGMVTGLK LSQDLDDLAI LYLATVQAIA LGTRFIEAM EAAGHSISTL FLCGGLSKNP L FVQMHADIT GMPVVLSQEV ESVLVGAAVL GACASGFAS VQEAMAKMSK VGKVVFPRLQ DKKYYDKKYQ VFLKLVEHQK EYLAIMNDD
Characteristics:	Human FLJ10986 full-length ORF (NP_060761.2, 1 a.a. - 439 a.a.) recombinant protein with GST-tag at N-terminal.

Product Details

Purification: in vitro wheat germ expression system

Target Details

Target: FGGY

Alternative Name: FGGY (FGGY Products)

Background: Full Gene Name: FGGY carbohydrate kinase domain containing
Synonyms: FLJ10986

Gene ID: 55277

NCBI Accession: [NM_018291](#)

Application Details

Application Notes: Optimal working dilution should be determined by the investigator.

Comment: Preparation method: in vitro, wheat germ expression system
Product Quality tested by: 12.5% SDS-PAGE Stained with Coomassie Blue.

Restrictions: For Research Use only

Handling

Buffer: 50 mM Tris-HCl, 10 mM reduced Glutathione, pH =8.0 in the elution buffer.

Handling Advice: Aliquot to avoid repeated freezing and thawing.

Storage: -80 °C

Storage Comment: Best use within three months from the date of receipt of this protein.

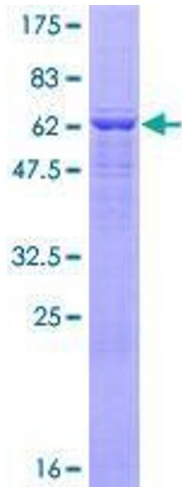


Image 1.