



[Go to Product page](#)

Datasheet for ABIN1354068
FH Protein (AA 33-510) (GST tag)

1 Image

Overview

Quantity:	10 µg
Target:	FH
Protein Characteristics:	AA 33-510
Origin:	Human
Source:	Wheat germ
Protein Type:	Recombinant
Purification tag / Conjugate:	This FH protein is labelled with GST tag.
Application:	Western Blotting (WB), ELISA, Antibody Array (AA), Affinity Purification (AP)

Product Details

Sequence: VPSFWPPNAA RMA SQNSFRI EYDTFGELKV PNDKYYGAQT VRSTMNFKIG GVTERMPTPV
IKAFGILKRA AAEVNQDYGL DPKIANAIMK AADEVAEGKL NDHFPLVVWQ TGSGTQTNMN
VNEVISNRAI EMLGGELGSK IPVHPNDHVN KSQSSNDTFP TAMHIAAAIE VHEVLLPGLQ
KLHDALDAKS KEFAQIIKIG RTHTQDAVPL TLGQEFSGYV QQVKYAMTRI KAAMPRIYEL
AAGGTAVGTG LNTRIGFAEK VAAKVAALTG LPFVTAPNKF EALAAHDALV ELSGAMNTTA
CSLMKIANDI RFLGSGPRSG LGELILPENE PGSSIMPGKV NPTQCEAMTM VAAQVMGNHV
AVTVGGSNGH FELNVFKPMM IKNVLHSARL LGDASVSFTE NCVVGIQANT ERINKLMNES
LMLVTALNPH IGYDKAAKIA KTAHKNGSTL KETAIELGYL TAEQFDEWVK PKDMLGPK

Target Details

Target:	FH
Alternative Name:	FH (FH Products)

Target Details

Background: Full Gene Name: fumarate hydratase
Synonyms: HLRCC,LRCC,MCL,MCUL1

Gene ID: 2271

Application Details

Application Notes: Optimal working dilution should be determined by the investigator.

Comment: Preparation method: in vitro, wheat germ expression system
Product Quality tested by: 12.5% SDS-PAGE Stained with Coomassie Blue.

Restrictions: For Research Use only

Handling

Buffer: 50 mM Tris-HCl, 10 mM reduced Glutathione, pH =8.0 in the elution buffer.

Handling Advice: Aliquot to avoid repeated freezing and thawing.

Storage: -80 °C

Storage Comment: Store at -80 °C. Aliquot to avoid repeated freezing and thawing.

Expiry Date: 3 months

Images

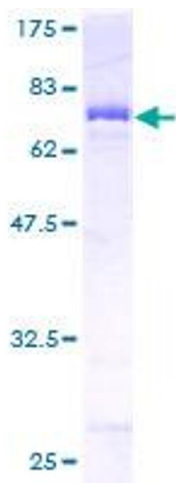


Image 1.