

Datasheet for ABIN1354072
FHL1 Protein (AA 1-280) (GST tag)



[Go to Product page](#)

1 Image

Overview

Quantity:	10 µg
Target:	FHL1
Protein Characteristics:	AA 1-280
Origin:	Human
Source:	Wheat germ
Protein Type:	Recombinant
Purification tag / Conjugate:	This FHL1 protein is labelled with GST tag.
Application:	Western Blotting (WB), ELISA, Antibody Array (AA), Affinity Purification (AP)

Product Details

Purpose:	FHL1 (Human) Recombinant Protein (P01)
Sequence:	MAEKFDCHYC RDPLQGKKYV QKDGHHCCCLK CFDKFCANTC VECRKPIGAD SKEVHYKNRF WHDTCFRCAK CLHPLANETF VAKDNKILCN KCTTREDSPK CKGCFKAIVA GDQNVEYKGT VWHKDCFTCS NCKQVIGTGS FFPKGEDFYC VTCHETKFAK HCVKCNKAIT SGGITYQDQP WHADCFVCVT CSKLAGQRF TAVEDQYYCV DCYKNFVAKK CAGCKNPITG FGKGSSVVAY EGQSWHDYCF HCKKCSVNLA NKRFVFHQEQ VYCPDCAKKL
Characteristics:	Human FHL1 full-length ORF (NP_001440.2, 1 a.a. - 280 a.a.) recombinant protein with GST-tag at N-terminal.
Purification:	in vitro wheat germ expression system

Target Details

Target:	FHL1
Alternative Name:	FHL1 (FHL1 Products)
Background:	Full Gene Name: four and a half LIM domains 1 Synonyms: FHL1B,FLH1A,KYO-T,MGC111107,SLIM1,XMPMA,bA535K18.1
Gene ID:	2273
NCBI Accession:	NM_001449

Application Details

Application Notes:	Optimal working dilution should be determined by the investigator.
Comment:	Preparation method: in vitro, wheat germ expression system Product Quality tested by: 12.5% SDS-PAGE Stained with Coomassie Blue.
Restrictions:	For Research Use only

Handling

Buffer:	50 mM Tris-HCl, 10 mM reduced Glutathione, pH =8.0 in the elution buffer.
Handling Advice:	Aliquot to avoid repeated freezing and thawing.
Storage:	-80 °C
Storage Comment:	Best use within three months from the date of receipt of this protein.

Images

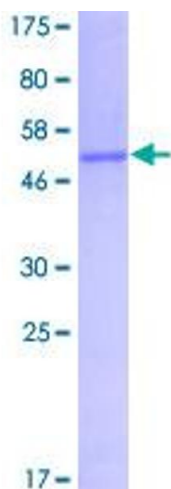


Image 1.