

Datasheet for ABIN1354074  
**FHL1 Protein (AA 23-120) (GST tag)**



[Go to Product page](#)

1 Image

Overview

Quantity:	10 µg
Target:	FHL1
Protein Characteristics:	AA 23-120
Origin:	Human
Source:	Wheat germ
Protein Type:	Recombinant
Purification tag / Conjugate:	This FHL1 protein is labelled with GST tag.
Application:	Western Blotting (WB), ELISA, Antibody Array (AA), Affinity Purification (AP)

Product Details

Purpose:	FHL1 (Human) Recombinant Protein (Q01)
Sequence:	DGHHCLCKCF DKFCANTCVE CRKPIGADSK EVHYKNRFWH DTCFRCAKCL HPLANETFVA KDNKILCNKC TTREDSPKCK GCFKAIVAGD QNVEYKGT
Characteristics:	Human FHL1 partial ORF ( NP_001440, 23 a.a. - 120 a.a.) recombinant protein with GST-tag at N-terminal.
Purification:	in vitro wheat germ expression system

Target Details

Target:	FHL1
Alternative Name:	FHL1 ( <a href="#">FHL1 Products</a> )

## Target Details

Background:	Full Gene Name: four and a half LIM domains 1 Synonyms: FHL1B,FLH1A,KYO-T,MGC111107,SLIM1,XMPMA,bA535K18.1
Gene ID:	2273
NCBI Accession:	<a href="#">NM_001449</a>

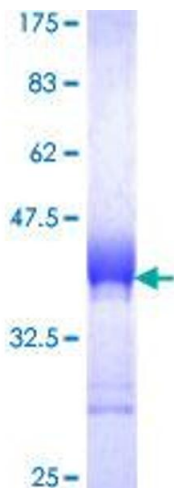
## Application Details

Application Notes:	Optimal working dilution should be determined by the investigator.
Comment:	Preparation method: in vitro, wheat germ expression system Product Quality tested by: 12.5% SDS-PAGE Stained with Coomassie Blue.
Restrictions:	For Research Use only

## Handling

Buffer:	50 mM Tris-HCl, 10 mM reduced Glutathione, pH =8.0 in the elution buffer.
Handling Advice:	Aliquot to avoid repeated freezing and thawing.
Storage:	-80 °C
Storage Comment:	Best use within three months from the date of receipt of this protein.

## Images



**Image 1.**