

Datasheet for ABIN1354082
FHL5 Protein (AA 1-284) (GST tag)



[Go to Product page](#)

1 Image

Overview

Quantity:	10 µg
Target:	FHL5
Protein Characteristics:	AA 1-284
Origin:	Human
Source:	Wheat germ
Protein Type:	Recombinant
Purification tag / Conjugate:	This FHL5 protein is labelled with GST tag.
Application:	ELISA, Western Blotting (WB), Antibody Array (AA), Affinity Purification (AP)

Product Details

Purpose:	FHL5 (Human) Recombinant Protein (P01)
Sequence:	MTTAHFYCQY CTASLLGKKY VLKDDSPYCV TCYDRVFSNY CEECKPIES DSKDLCYKDR HWHEGCFKCT KCNHSLVEKP FAAKDERLLC TECYSNECSS KCFHCKRTIM PGSRKMEFKG NYWHETCFVC ENCRQPIGTK PLISKESGNY CVPCFEKEFA HYNCFCKKVI TSGGITFCDDQ LWHKECF LCS DCRKDLCEEQ FMSRDDYPFC MDCYNHLYAN KCVACSKPIS GLTGAKFICF QDSQWHSECF NCGKCSVSLV GKGFLTQNKE IFCQKCGSGM DTDI
Characteristics:	Human FHL5 full-length ORF (AAH21723, 1 a.a. - 284 a.a.) recombinant protein with GST-tag at N-terminal.
Purification:	in vitro wheat germ expression system

Target Details

Target:	FHL5
Alternative Name:	FHL5 (FHL5 Products)
Background:	Full Gene Name: four and a half LIM domains 5 Synonyms: ACT,FLJ33049,KIAA0776,RP3-393D12.2,dJ393D12.2
Gene ID:	9457

Application Details

Application Notes:	Optimal working dilution should be determined by the investigator.
Comment:	Preparation method: in vitro, wheat germ expression system Product Quality tested by: 12.5% SDS-PAGE Stained with Coomassie Blue.
Restrictions:	For Research Use only

Handling

Buffer:	50 mM Tris-HCl, 10 mM reduced Glutathione, pH =8.0 in the elution buffer.
Handling Advice:	Aliquot to avoid repeated freezing and thawing.
Storage:	-80 °C
Storage Comment:	Best use within three months from the date of receipt of this protein.

Images

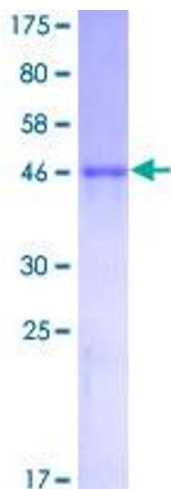


Image 1.