



[Go to Product page](#)

Datasheet for ABIN1354090

FICD Protein (AA 1-449) (GST tag)

1 Image

Overview

Quantity:	10 µg
Target:	FICD
Protein Characteristics:	AA 1-449
Origin:	Human
Source:	Wheat germ
Protein Type:	Recombinant
Purification tag / Conjugate:	This FICD protein is labelled with GST tag.
Application:	ELISA, Western Blotting (WB), Antibody Array (AA), Affinity Purification (AP)

Product Details

Purpose:	HYPE (Human) Recombinant Protein (P01)
Sequence:	MAVTEPKWVS VWSRFLWVTL LSMVLGSLLA LLLPLGAVEE QCLAVLKGLY LLRSKPDRAQ HAATKCTSPS TELSITSRGA TLLVAKTKAS PAGKLEARAA LNQALEMKRQ GKREKAQKLF MHALKMDFPDF VDALTEFGIF SEEDKDIIQA DYLYTRALTI SPYHEKALVN RDRTLPLVEE IDQRYFSIID SKVKKVMSIP KGNSALRRVM EETYYHHIYH TVAIEGNTLT LSEIRHILET RYAVPGKSLE EQNEVIGMHA AMKYINTTLV SRIGSVTISD VLEIHRRLVG YVDPVEAGR RTTQVLVGHG IPPHPQDVEK QMQEFVQWLN SEEAMNLHPV EFAALAHYKL VYIHPFIDGN GRTSRLLMNL ILMQAGYPPI TIRKEQRSY YHVLEAANEG DVRPFIRFIA KCTETTLDTL LFATTEYSVA LPEAQPNSHG FKETLPVKP
Characteristics:	Human HYPE full-length ORF (AAH01342, 1 a.a. - 449 a.a.) recombinant protein with GST-tag at N-terminal.

Product Details

Purification: in vitro wheat germ expression system

Target Details

Target: FICD

Alternative Name: FICD ([FICD Products](#))

Background: Full Gene Name: FIC domain containing
Synonyms: HIP13,HYPE,MGC5623,UNQ3041

Gene ID: 11153

Application Details

Application Notes: Optimal working dilution should be determined by the investigator.

Comment: Preparation method: in vitro, wheat germ expression system
Product Quality tested by: 12.5% SDS-PAGE Stained with Coomassie Blue.

Restrictions: For Research Use only

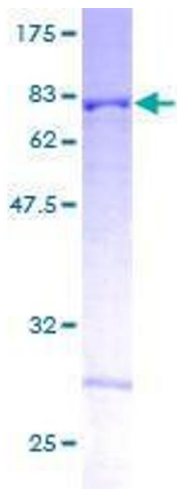
Handling

Buffer: 50 mM Tris-HCl, 10 mM reduced Glutathione, pH =8.0 in the elution buffer.

Handling Advice: Aliquot to avoid repeated freezing and thawing.

Storage: -80 °C

Storage Comment: Best use within three months from the date of receipt of this protein.



SDS-PAGE

Image 1.