

Datasheet for ABIN1354109

FJX1 Protein (AA 1-437) (GST tag)



[Go to Product page](#)

1 Image

Overview

Quantity:	25 µg
Target:	FJX1
Protein Characteristics:	AA 1-437
Origin:	Human
Source:	Wheat germ
Protein Type:	Recombinant
Purification tag / Conjugate:	This FJX1 protein is labelled with GST tag.
Application:	ELISA, Western Blotting (WB), Antibody Array (AA), Affinity Purification (AP)

Product Details

Purpose:	FJX1 (Human) Recombinant Protein (P01)
Sequence:	MGRRMGAAA TAGLWLLALG SLLALWGGLL PPRTLPASR PPEDRLPRRP ARSGGPAPAP RFPLPPPLAW DARGGSLKTF RALLTLAAGA DGPPRQSRSE PRWHVSARQP RPEESA AVHG GVFWSRGL EE QVPPGFSEAQ AAWLEAARG ARMVALERGG CGRSSNRLAR FADGTRACVR YGINPEQIQG EALSYYLARL LGLQRHVPPL ALARVEARGA QWAQVQEELR AAHWTEGSSV SLTRWLPNLT DVVVPAPWRS EDGRLRPLRD AGGELANLSQ AELVDLVQWT DLILFDYLT A NFDRLVSNLF SLQWDPRVMQ RATSNLHRGP GGALVFLDNE AGLVHGYRVA GMWDKYNEPL LQSVCFRER TARRVLELHR GQDAAARLLR LYRRHEPRFP ELAALADPHA QLLQRRRLDFL AKHILHCKAK YGRRSGT
Characteristics:	Human FJX1 full-length ORF (NP_055159.2, 1 a.a. - 437 a.a.) recombinant protein with GST-tag at N-terminal.

Product Details

Purification: in vitro wheat germ expression system

Target Details

Target: FJX1

Alternative Name: FJX1 ([FJX1 Products](#))

Background: Full Gene Name: four jointed box 1 (Drosophila)
Synonyms: FLJ22416,FLJ25593

Gene ID: 24147

NCBI Accession: [NM_014344](#)

Application Details

Application Notes: Optimal working dilution should be determined by the investigator.

Comment: Preparation method: in vitro, wheat germ expression system
Product Quality tested by: 12.5% SDS-PAGE Stained with Coomassie Blue.

Restrictions: For Research Use only

Handling

Buffer: 50 mM Tris-HCl, 10 mM reduced Glutathione, pH =8.0 in the elution buffer.

Handling Advice: Aliquot to avoid repeated freezing and thawing.

Storage: -80 °C

Storage Comment: Best use within three months from the date of receipt of this protein.

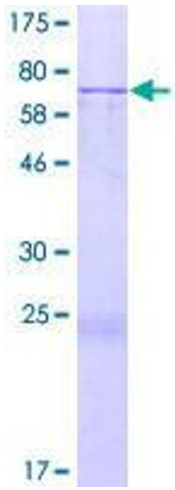


Image 1.