

Datasheet for ABIN1354114
FKBP14 Protein (AA 1-211) (GST tag)



[Go to Product page](#)

1 Image

Overview

Quantity:	10 µg
Target:	FKBP14
Protein Characteristics:	AA 1-211
Origin:	Human
Source:	Wheat germ
Protein Type:	Recombinant
Purification tag / Conjugate:	This FKBP14 protein is labelled with GST tag.
Application:	ELISA, Western Blotting (WB), Antibody Array (AA), Affinity Purification (AP)

Product Details

Purpose:	FKBP14 (Human) Recombinant Protein (P01)
Sequence:	MRLFLWNAVL TLFVTSLIGA LIPEPEVKIE VLQKPFICHR KTKGGDLMLV HYEGYLEKDG SLFHSTHKHN NGQPIWFTLG ILEALKGWDQ GLKGMCVGEK RKLIIPPALG YGKEGKGIKIP PESTLIFNID LLEIRNGPRS HESFQEMDLN DDWKLKDEV KAYLKKEFEK HGAVVNESH DALVEDIFDK EDEDKDGFI AREFTYKHDE L
Characteristics:	Human FKBP14 full-length ORF (NP_060416.1, 1 a.a. - 211 a.a.) recombinant protein with GST-tag at N-terminal.
Purification:	in vitro wheat germ expression system

Target Details

Target:	FKBP14
---------	--------

Target Details

Alternative Name:	FKBP14 (FKBP14 Products)
Background:	Full Gene Name: FK506 binding protein 14, 22 kDa Synonyms: FKBP22,FLJ20731
Gene ID:	55033
NCBI Accession:	NM_017946
Pathways:	ER-Nucleus Signaling

Application Details

Application Notes:	Optimal working dilution should be determined by the investigator.
Comment:	Preparation method: in vitro, wheat germ expression system Product Quality tested by: 12.5% SDS-PAGE Stained with Coomassie Blue.
Restrictions:	For Research Use only

Handling

Buffer:	50 mM Tris-HCl, 10 mM reduced Glutathione, pH =8.0 in the elution buffer.
Handling Advice:	Aliquot to avoid repeated freezing and thawing.
Storage:	-80 °C
Storage Comment:	Best use within three months from the date of receipt of this protein.

Images

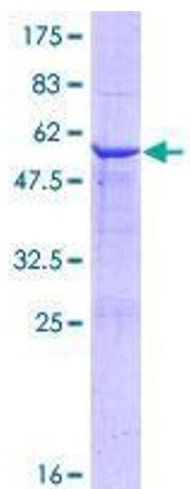


Image 1.