



[Go to Product page](#)

Datasheet for ABIN1354144

FKBPL Protein (AA 1-349) (GST tag)

1 Image

Overview

Quantity:	10 µg
Target:	FKBPL
Protein Characteristics:	AA 1-349
Origin:	Human
Source:	Wheat germ
Protein Type:	Recombinant
Purification tag / Conjugate:	This FKBPL protein is labelled with GST tag.
Application:	Western Blotting (WB), ELISA, Antibody Array (AA), Affinity Purification (AP)

Product Details

Purpose:	FKBPL (Human) Recombinant Protein (P01)
Sequence:	METPPVNTIG EKDTSQPQEQE WEKNLRENLD SVIQIRQQPR DPPTETLELE VSPDPASQIL EHTQGAEKLV AELEGDSHKS HGSTSQMPEA LQASDLWYCP DGSFVKKIVI RGHGLDKPKL GSCCRVLALG PFPGSGPPEG WTELTMGVGP WREETWGELI EKCLESMCQG EEAEQLPGH SGPPVRLTLA SFTQGRDSWE LETSEKEALA REERARGTEL FRAGNPEGAA RCYGRALRL LTLPPPGPPE RTVLHANLAA CQLLLGQPQL AAQSCDRVLE REPGHLKALY RRGVAQAALG NLEKATADLK KVLAIDPKNR AAQEELGKVV IQGKNQDAGL AQGLRKMFG
Characteristics:	Human FKBPL full-length ORF (NP_071393.2, 1 a.a. - 349 a.a.) recombinant protein with GST-tag at N-terminal.
Purification:	in vitro wheat germ expression system

Target Details

Target:	FKBPL
Alternative Name:	FKBPL (FKBPL Products)
Background:	Full Gene Name: FK506 binding protein like Synonyms: DIR1,NG7,WISP39
Gene ID:	63943
NCBI Accession:	NM_022110

Application Details

Application Notes:	Optimal working dilution should be determined by the investigator.
Comment:	Preparation method: in vitro, wheat germ expression system Product Quality tested by: 12.5% SDS-PAGE Stained with Coomassie Blue.
Restrictions:	For Research Use only

Handling

Buffer:	50 mM Tris-HCl, 10 mM reduced Glutathione, pH =8.0 in the elution buffer.
Handling Advice:	Aliquot to avoid repeated freezing and thawing.
Storage:	-80 °C
Storage Comment:	Best use within three months from the date of receipt of this protein.

Images

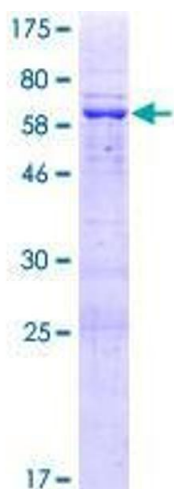


Image 1.