

Datasheet for ABIN1354157

## Protein SOLO Protein (FLJ10357) (AA 1-326) (GST tag)



[Go to Product page](#)

### 1 Image

#### Overview

Quantity:	10 µg
Target:	Protein SOLO (FLJ10357)
Protein Characteristics:	AA 1-326
Origin:	Human
Source:	Wheat germ
Protein Type:	Recombinant
Purification tag / Conjugate:	This Protein SOLO protein is labelled with GST tag.
Application:	Antibody Array (AA), Affinity Purification (AP), ELISA, Western Blotting (WB)

#### Product Details

Purpose:	FLJ10357 (Human) Recombinant Protein (P01)
Sequence:	MEAGPYLPRA LQQPLEQLTR YGRILLEELLR EAGPELSSEC RALGAAVQLL REQEARGRDL LAVEAVRGCE IDLKEQGQLL HRDPFTVICG RKKCLRHVFL FEHLLLF SKL KGPEGGSEMF VYKQAFKTAD MGLTENIGDS GLCFELWFRR RRAREAYTLQ ATSPEIKLKW TSSIAQLLWR QAAHNKELRV QQMVMGIGN KPFLDIKALG ERTLSALLTG RAARPRASVA VSSFHAGPS LPGLSPGACS LPARVEEEAW DLDVKQISLA PETLDSSGDV SPGPRNSPSL QPPHPGSSTP TLASRGILGL SRQSHARALS DPTTPL
Characteristics:	Human FLJ10357 full-length ORF ( AAH00084.3, 1 a.a. - 326 a.a.) recombinant protein with GST-tag at N-terminal.
Purification:	in vitro wheat germ expression system

## Target Details

Target:	Protein SOLO (FLJ10357)
Alternative Name:	FLJ10357 ( <a href="#">FLJ10357 Products</a> )
Background:	Full Gene Name: hypothetical protein FLJ10357 Synonyms: SOLO
Gene ID:	55701

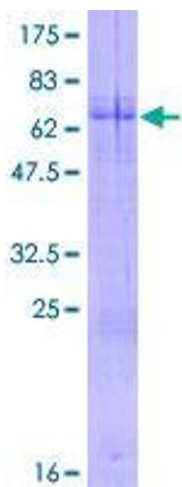
## Application Details

Application Notes:	Optimal working dilution should be determined by the investigator.
Comment:	Preparation method: in vitro, wheat germ expression system Product Quality tested by: 12.5% SDS-PAGE Stained with Coomassie Blue.
Restrictions:	For Research Use only

## Handling

Buffer:	50 mM Tris-HCl, 10 mM reduced Glutathione, pH =8.0 in the elution buffer.
Handling Advice:	Aliquot to avoid repeated freezing and thawing.
Storage:	-80 °C
Storage Comment:	Best use within three months from the date of receipt of this protein.

## Images



**Image 1.**