



[Go to Product page](#)

Datasheet for ABIN1354163

CPSF7 Protein (AA 1-471) (GST tag)

1 Image

Overview

Quantity:	25 µg
Target:	CPSF7
Protein Characteristics:	AA 1-471
Origin:	Human
Source:	Wheat germ
Protein Type:	Recombinant
Purification tag / Conjugate:	This CPSF7 protein is labelled with GST tag.
Application:	ELISA, Western Blotting (WB), Antibody Array (AA), Affinity Purification (AP)

Product Details

Purpose:	FLJ12529 (Human) Recombinant Protein (P01)
Sequence:	MSEGVDLIDI YADEEFNQDP EFNNTDQIDL YDDVLTATSQ PSDDRSSSTE PPPPVRQEPS PKPNNKTPAI LYTYSGLRNR RAAVYVGSFS WWTTDQQLIQ VIRSIGVYDV VELKFAENRA NGQSKGYAEV VVASENSVHK LLELLPGKVL NGEKVDVRPA TRQNLSQFEA QARKRECVRV PRGGIPPAH SRDSSDSADG RATPSENLVP SSARVDKPPS VLPYFNRPPS ALPLMGLPPP PIPPPPPLSS SFGVPPPPPG IHYQHLMPPP PRLPPHLAVP PPGAIPPALH LNPAFFPPPN ATVGPPPDY MKASAPYNHH GSRDSGPPPS TVSEAEFEDI MKRNRAISS AISKAVSGAS AGDYSDAIET LLTIAVIKQ SRVANDERCRLISSLKDCL HGIEAKSYSV GASGSSSRKR HRSRERSPSR SRESSRRHRD LLHNEDRHDD YFQERNREHE RHRDRERDRH H
Characteristics:	Human FLJ12529 full-length ORF (NP_079087.2, 1 a.a. - 471 a.a.) recombinant protein with GST-tag at N-terminal.

Product Details

Purification: in vitro wheat germ expression system

Target Details

Target: CPSF7

Alternative Name: FLJ12529 ([CPSF7 Products](#))

Background: Full Gene Name: pre-mRNA cleavage factor I, 59 kDa subunit
Synonyms: FLJ39024,MGC9315

Gene ID: 79869

NCBI Accession: [NM_024811](#)

Application Details

Application Notes: Optimal working dilution should be determined by the investigator.

Comment: Preparation method: in vitro, wheat germ expression system
Product Quality tested by: 12.5% SDS-PAGE Stained with Coomassie Blue.

Restrictions: For Research Use only

Handling

Buffer: 50 mM Tris-HCl, 10 mM reduced Glutathione, pH =8.0 in the elution buffer.

Handling Advice: Aliquot to avoid repeated freezing and thawing.

Storage: -80 °C

Storage Comment: Best use within three months from the date of receipt of this protein.

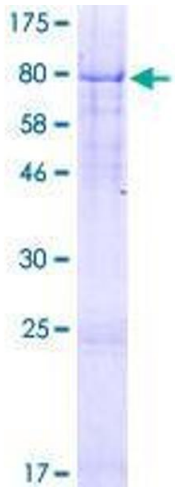


Image 1.