



[Go to Product page](#)

Datasheet for ABIN1354218

FLT1 Protein (AA 581-687) (GST tag)

1 Image

Overview

Quantity:	10 µg
Target:	FLT1
Protein Characteristics:	AA 581-687
Origin:	Human
Source:	Wheat germ
Protein Type:	Recombinant
Purification tag / Conjugate:	This FLT1 protein is labelled with GST tag.
Application:	Western Blotting (WB), ELISA, Antibody Array (AA), Affinity Purification (AP)

Product Details

Purpose:	FLT1 (Human) Recombinant Protein (Q01)
Sequence:	KFLYRDVTWI LLRTVNNRTM HYSISKQKMA ITKEHSITLN LTIMNVSLQD SGTYACRARN VYTGEEILQK KEITIRGEHC NKKAVFSRIS KFKSTRNDCT TQSNVKH
Characteristics:	Human FLT1 partial ORF (AAH39007, 581 a.a. - 687 a.a.) recombinant protein with GST-tag at N-terminal.
Purification:	in vitro wheat germ expression system

Target Details

Target:	FLT1
Alternative Name:	FLT1 (FLT1 Products)

Target Details

Background:	Full Gene Name: fms-related tyrosine kinase 1 (vascular endothelial growth factor/vascular permeability factor receptor) Synonyms: FLT, VEGFR1
Gene ID:	2321
Pathways:	RTK Signaling , Signaling Events mediated by VEGFR1 and VEGFR2 , VEGFR1 Specific Signals

Application Details

Application Notes:	Optimal working dilution should be determined by the investigator.
Comment:	Preparation method: in vitro, wheat germ expression system Product Quality tested by: 12.5% SDS-PAGE Stained with Coomassie Blue.
Restrictions:	For Research Use only

Handling

Buffer:	50 mM Tris-HCl, 10 mM reduced Glutathione, pH =8.0 in the elution buffer.
Handling Advice:	Aliquot to avoid repeated freezing and thawing.
Storage:	-80 °C
Storage Comment:	Best use within three months from the date of receipt of this protein.

Images

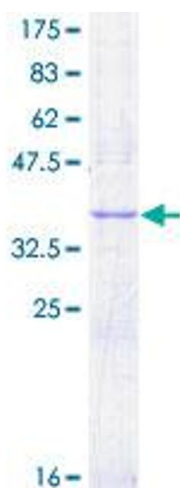


Image 1.