



[Go to Product page](#)

Datasheet for ABIN135422  
**anti-H-2Dd antibody (Biotin)**

1 Image

### Overview

Quantity:	0.5 mg
Target:	H-2Dd
Reactivity:	Mouse
Host:	Mouse
Clonality:	Monoclonal
Conjugate:	This H-2Dd antibody is conjugated to Biotin
Application:	Flow Cytometry (FACS), Immunoprecipitation (IP)

### Product Details

Immunogen:	BDF1 mouse splenocytes
Clone:	34-5-8S
Isotype:	IgG2a
Specificity:	Mouse H-2Dd
Characteristics:	Mouse Anti-Mouse H-2Dd-BIOT

### Target Details

Target:	H-2Dd
Alternative Name:	H-2Dd ( <a href="#">H-2Dd Products</a> )

## Application Details

Application Notes: Working Dilution:  
1  $\mu\text{g}/10^6$  cells  
Representative data are included in this product insert.

Each laboratory should determine an optimum working titer for use in its particular application. Other applications have not been tested but use in such assays should not necessarily be excluded.

Comment: Complement-dependent cytotoxicity, Blocking of antigen recognition, Immunoaffinity chromatography

Sample Volume: 1 mL

Restrictions: For Research Use only

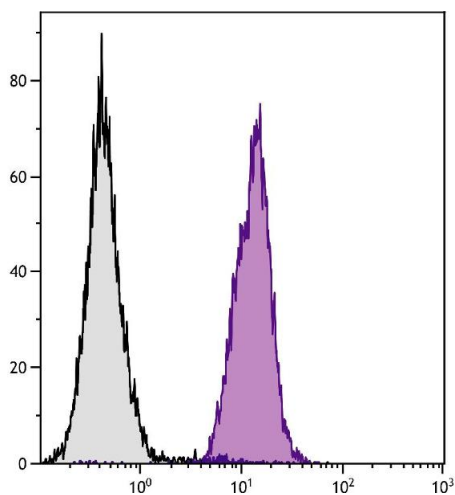
## Handling

Buffer: Product is supplied as 0.5 mg in 1.0 mL of PBS / NaN<sub>3</sub>.

Handling Advice: **Protect conjugated products from light.**  
Each reagent is stable for the period shown on the bottle label if stored as directed.

Storage: 4 °C

## Images



### Flow Cytometry

**Image 1.** DBA/2 mouse splenocytes were stained with Mouse Anti-Mouse H-2Dd-BIOT.